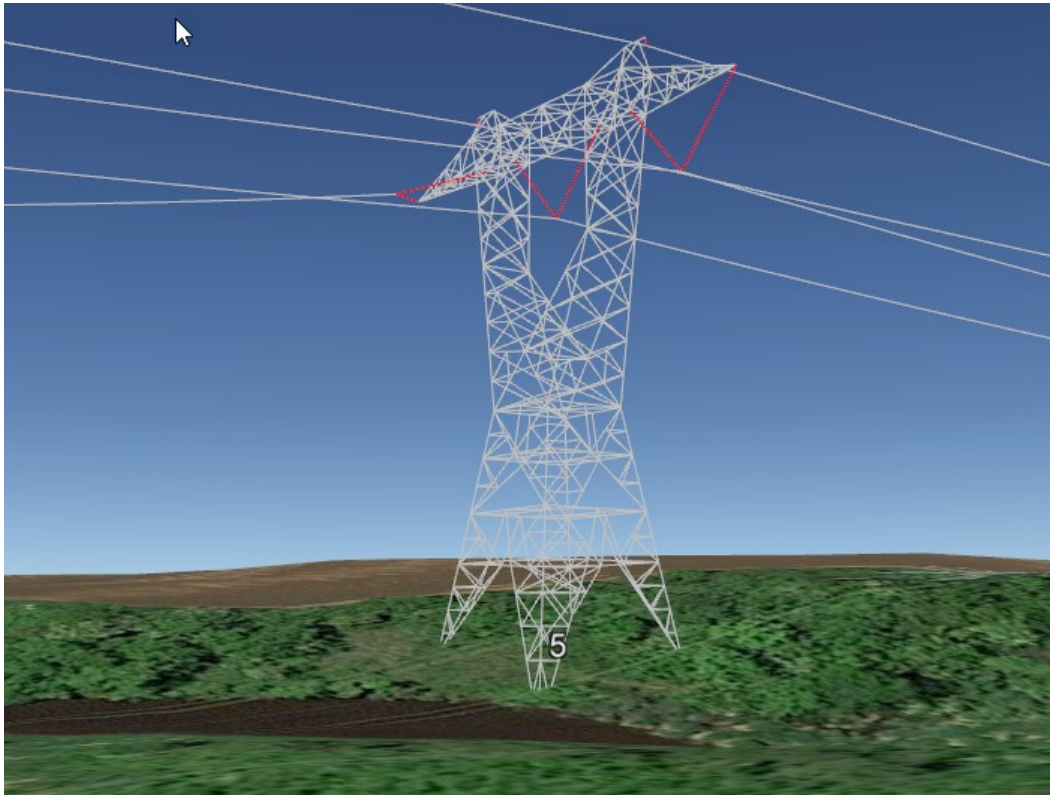


# Advanced PLS-CADD Seminar

## Advanced Topics for Design of Overhead Transmission and Distribution Lines using PLS-CADD



April 16 - 18, 2019

8:30 AM to 4:30 PM Tuesday

8:30 AM to 5:30 PM Wednesday

8:30 AM to 12:00 PM Thursday

at

Power Line Systems

610 N. Whitney Way

Suite 160

Madison, WI 53705

**POWER LINE**<sup>®</sup>  
S Y S T E M S

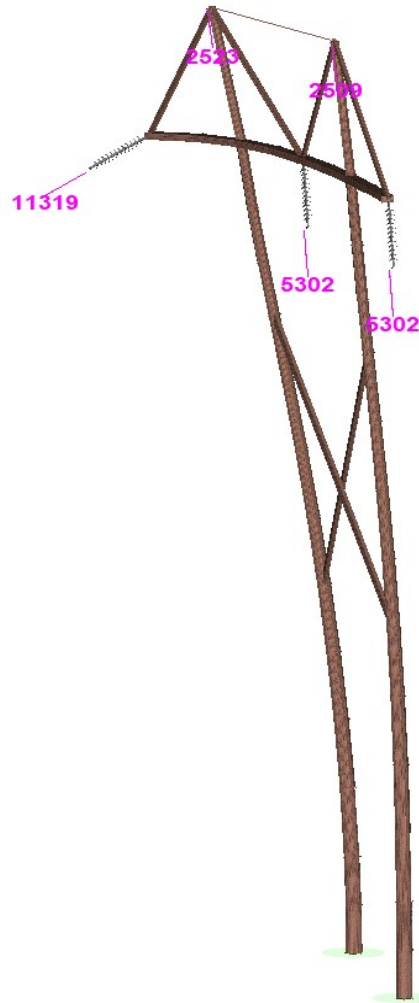
Power Line Systems  
610 N. Whitney Way  
Suite 160  
Madison, WI 53705  
Phone: (608) 238-2171  
Fax: (608) 238-9241  
<http://www.powline.com>

Learn the Industry  
Standard in Overhead Line  
Design Software

PLS-CADD is the industry standard in overhead line design and drafting software. This course will explore more advanced topics in PLS-CADD and PLS-POLE. The attendees will learn how to utilize and apply these advanced topics to their transmission or distribution projects and become more proficient in the use of the software.

## Topics Covered

- Finite Element
  - Compare RS vs FE
  - Criteria requirements
  - Clipped vs unclipped insulators
  - Structural analysis (Levels 1, 2, 3 & 4)
  - Concentrated loads
  - Equalizing tensions
- PLS-CADD
  - Circuits
  - Lightning protection
  - Material options
  - XY Structures
  - Jumpers
- PLS-POLE
  - Swing angles
  - Base plates
  - Wood pole buckling
  - Unusual structures
- TOWER
  - Interpreting TOWER output for non-TOWER engineers



## Who Should Attend?

This course is open to all engineers and technicians whose companies currently use PLS-CADD. The intended audience is someone who currently designs transmission or distribution lines in PLS-CADD and wants to learn and apply more advanced features to improve their work.

## Prerequisite

Basic PLS-CADD training course or equivalent experience.

## Cost

The class costs \$1400 per person.

## More Information

A registration form is on the back of this brochure. Seats are limited to the first 44 registrants. We must receive payment and your registration form in order to reserve your seat.

Please see our web site at <http://www.powline.com/news.html#training> for other classes.



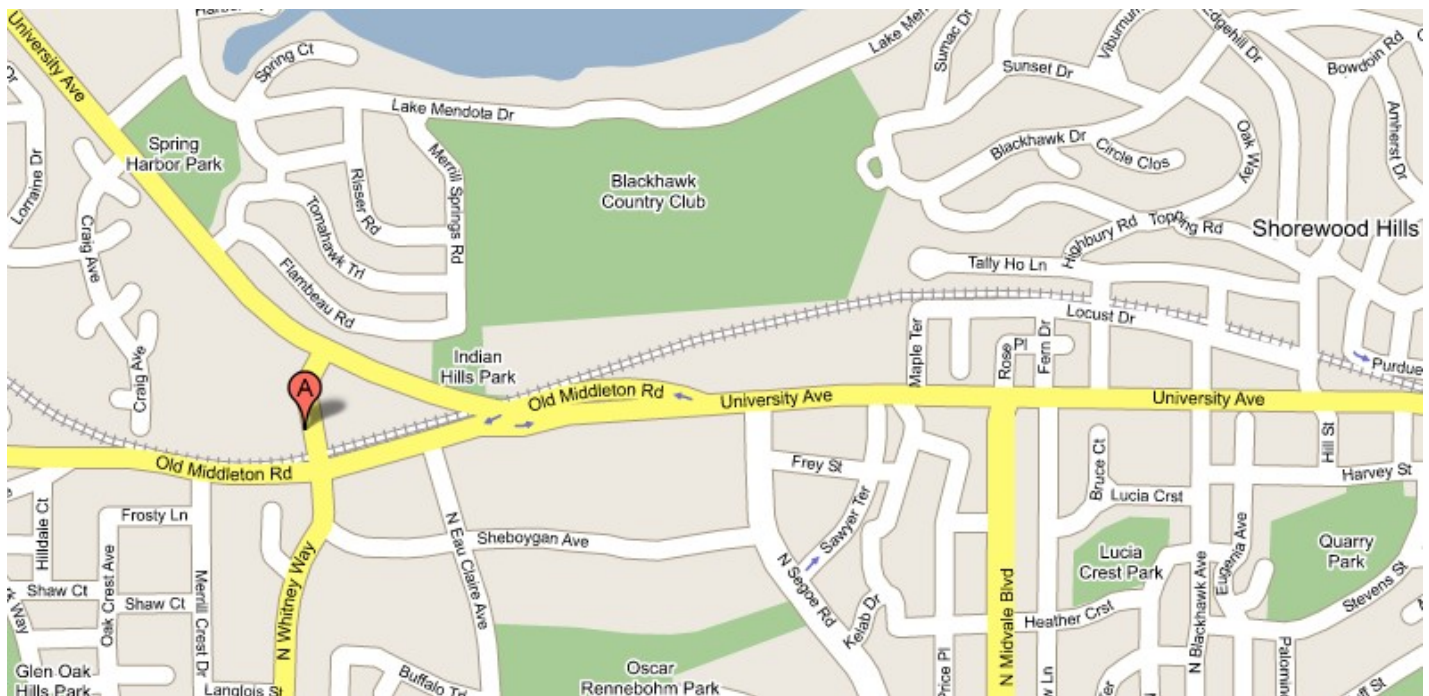
## Instructor

The course will be conducted by Tim Cashman, P.E., Power Line Systems. He has more than 29 years of experience in transmission line design ranging from voltages of 69kV through 500kV and using the PLS software suite. Tim is a registered Professional Engineer and is an active member of several ASCE Committees. Tim has conducted PLS-CADD, PLS-POLE and TOWER training classes for over 20 years and has recently been added to the Power Line Systems staff. Tim also provides technical support to PLS users in over 120 different countries around the world, performs software testing and participates in the development of new software features. He has an extreme in-depth knowledge of the software's functionality and implementation.

## Details

The class will be held from 8:30 AM to 4:30 PM Tuesday, 8:30AM to 5:30PM Wednesday and from 8:30 AM to 12:00 PM on Thursday (training room opens 15 minutes before class start each day). The course will be conducted at Power Line Systems headquarters in Madison, Wisconsin (point A in the map below). Lunch will be provided Tuesday and Wednesday. Attendees are responsible for all other costs incurred including lodging. Please see <http://www.powline.com/visiting.html> for a detailed map of Power Line Systems location and listings of area hotels.

## Computers and Software Provided



This is a 'hands-on' class where attendees will be learning by actually using PLS-CADD. A computer, hardware key, and the latest PLS-CADD software will be provided by Power Line Systems for each attendee for the duration of the class.

*Any audio or video recording of the class is strictly prohibited.*



610 N. Whitney Way, Suite 160  
Madison, Wisconsin 53705, USA  
Phone: (608) 238 2171 Fax: (608) 238-9241  
http://www.powline.com  
info@powline.com

## Advanced PLS-CADD Seminar Registration Form

April 16 - 18, 2019 in Madison, Wisconsin, USA

*Each attendee must submit a completed form to register – please print.*

*Please fax completed forms to (608) 238-9241*

### Attendee Information

Name (First/Last) \_\_\_\_\_ Phone \_\_\_\_\_  
Company \_\_\_\_\_ Fax \_\_\_\_\_  
Address \_\_\_\_\_ E-Mail \_\_\_\_\_  
\_\_\_\_\_  
City \_\_\_\_\_ State \_\_\_\_\_ Zip \_\_\_\_\_

### Payment Information

Full payment is required prior to the class and must be received in order to reserve a seat. Seats are reserved on a first-paid first-reserved basis and are limited to 44 people.

Check No. \_\_\_\_\_

I authorize Power Line Systems to charge my \_\_\_MasterCard \_\_\_Visa for the amount of \$1400. Note that Power Line Systems can only accept MasterCard or VISA credit cards. All attendees will be supplied with a computer, the PLS-CADD software and hardware key to use during the class.

Cardholder Name \_\_\_\_\_ Signature \_\_\_\_\_

Card No. \_\_\_\_\_ Expiration Date \_\_\_\_\_

CVC No. \_\_\_\_\_

Credit Card Billing Address \_\_\_\_\_

(if different than above) \_\_\_\_\_

City \_\_\_\_\_ State \_\_\_\_\_ Zip \_\_\_\_\_

### Cancellation Policy

Confirmed registrants who do not participate or who cancel after March 29, 2019, will forfeit their entire registration fee. Power Line Systems reserves the right to cancel the training session and will refund the entire class registration fee in the unlikely event this happens.