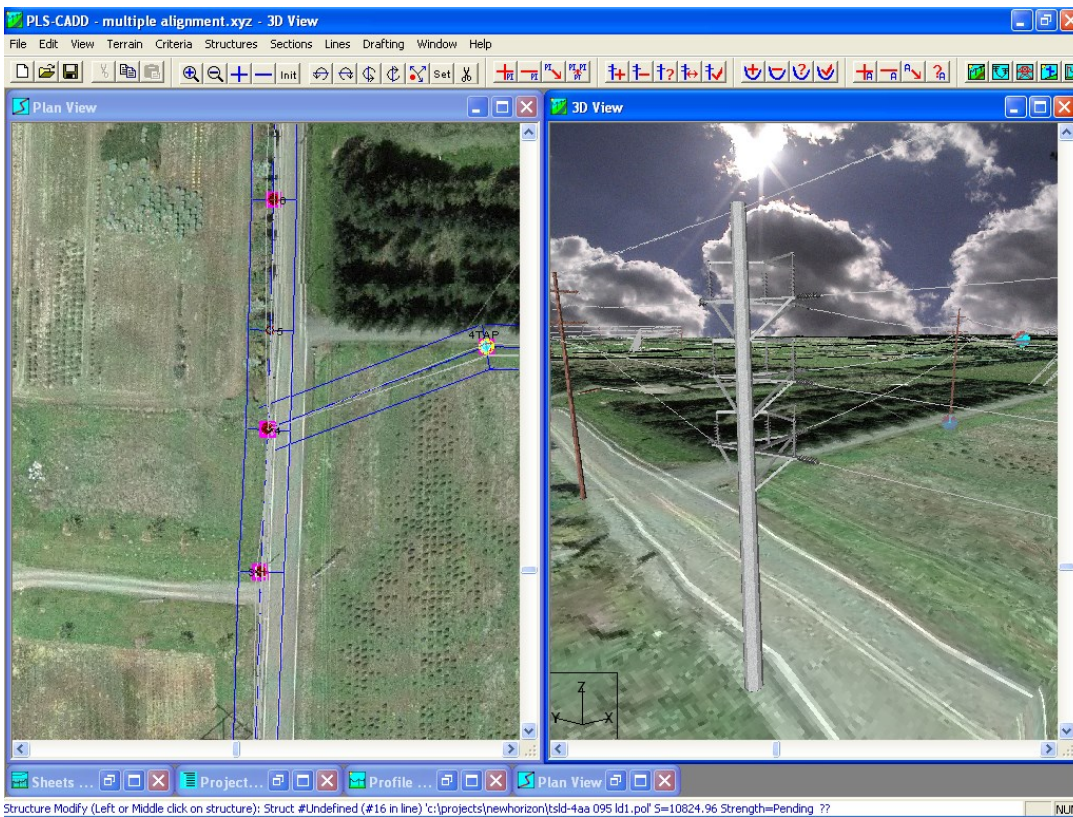


PLS-CADD Class

Design of Overhead Transmission Lines using PLS-CADD



January 25 - 29, 2016

1:00 PM to 5:30 PM Monday
8:30 AM to 4:30 PM Tues.-Thur.
8:30 AM to 12:00 PM Friday

at

Power Line Systems, Inc.
610 N. Whitney Way
Suite 160
Madison, WI 53705

POWER LINE[®]
SYSTEMS · INC ·

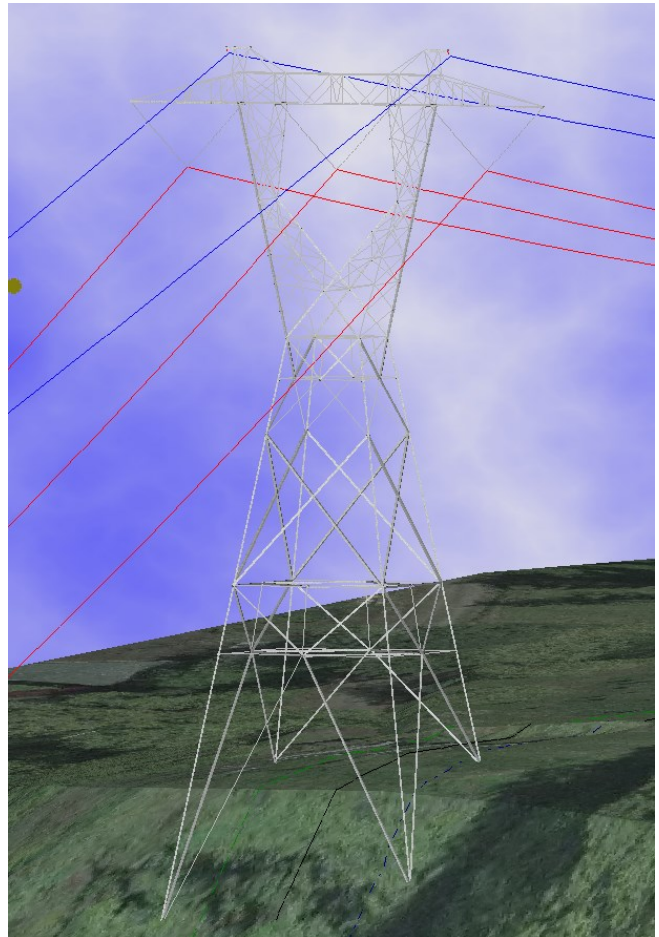
Power Line Systems, Inc.
610 N. Whitney Way
Suite 160
Madison, WI 53705
Phone: (608) 238-2171
Fax: (608) 238-9241
<http://www.powline.com>

**Learn the Industry
Standard in Overhead Line
Design Software**

PLS-CADD is the industry standard in overhead line design and drafting software. This course will teach the attendee how to use PLS-CADD on a project from start to finish, including importing survey data, criteria development, structure design, conductor sagging and Plan & Profile drawing development and plotting.

Topics Covered

- General Overview
- Survey data/Terrain modeling
- Engineering
 - Design criteria
 - Sag-tension calculations
 - Clearance calculations
 - Structure calculations
 - Manual spotting and stringing
 - Automatic spotting
- Generating construction documents: Staking tables and Plan & Profile Sheets
- PLS-CADD/LITE
- PLS-POLE integration with PLS-CADD and overview of TOWER
- Assessing existing lines for rerating and uprating
- Use of Finite Element Sag-Tension when ruling span is not applicable



Who Should Attend?

This course is open to all engineers and technicians whose companies currently use PLS-CADD or are considering purchasing it. The attendee should have some basic understanding of overhead line design concepts as the class focuses on the use of the software and not on the fundamentals of line design.

Cost

The class costs \$1800 per person.

More Information

A registration form is on the back of this brochure. Seats are limited to the first 44 registrants. We must receive payment and your registration form in order to reserve your seat.

Please see our web site at <http://www.powline.com/news.html#training> for other classes.

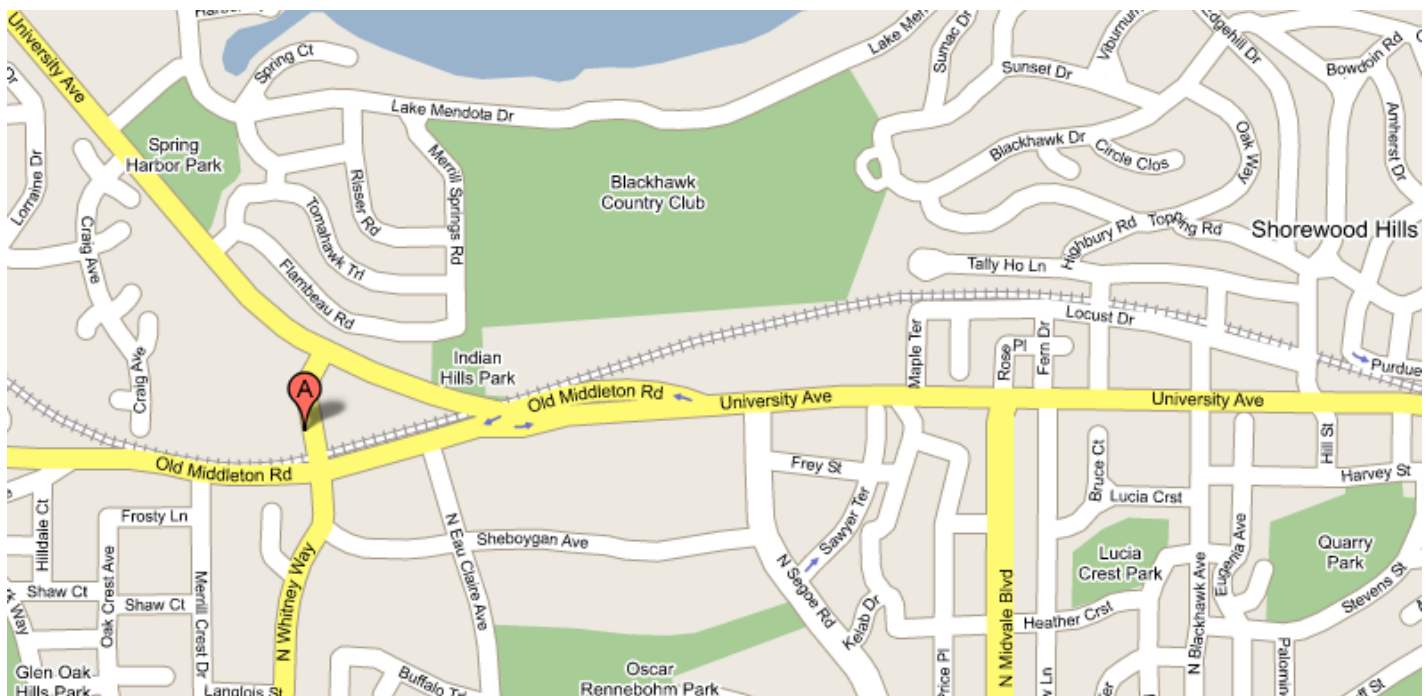


Instructor

The course will be conducted by Otto J. Lynch, P.E., Vice President of Power Line Systems. He has more than 24 years of experience in transmission line design and has used PLS-CADD since its inception. Otto is a registered Professional Engineer and is an active member of many ASCE, IEEE, and ANSI technical committees, including past-Chair of the ASCE Structural Engineering Institute Electrical Transmission Structures Committee. He is also a current member of Subcommittee 5 of the National Electric Safety Code. In 2012, Otto was the ASCE Gene Wilhoite Innovations in Transmission Line Engineering Award Winner. He was most recently inducted as a Fellow to the Structural Engineering Institute.

Details

The class will be held from 1:00 PM to 5:30 PM Monday, 8:30AM to 4:30PM Tuesday through Thursday and from 8:30 AM to 12:00 PM on Friday (training room opens 15 minutes before class start each day). The course will be conducted at Power Line Systems headquarters in Madison, Wisconsin (point A in the map below). Lunch will be provided Tuesday through Thursday. Attendees are responsible for all other costs incurred including lodging. Please see <http://www.powline.com/visiting.html> for a detailed map of Power Line Systems location and listings of area hotels.



Class Materials

A PLS training computer will be provided for each attendee, but you may use your own computer if you prefer. In either case, hardware keys and the latest PLS-CADD software will be provided for the duration of the class. If you are bringing your own notebook computer then please have the current version (see <http://www.powline.com/current.html>) installed on your computer with your key working prior to your departure for Madison. **The initial installation of the hardware key requires administrative privileges which may only be provided by your IT staff.**



610 N. Whitney Way, Suite 160
Madison, Wisconsin 53705, USA
Phone: (608) 238 2171 Fax: (608) 238-9241
http://www.powline.com
info@powline.com

PLS-CADD Class Registration Form

January 25 - 29, 2016 in Madison, Wisconsin, USA

Each attendee must submit a completed form to register – please print.

Attendee Information

Name (First/Last) _____ Phone _____

Company _____ Fax _____

Address _____ E-Mail _____

City _____ State _____ Zip _____

Payment Information

Full payment is required prior to the class and must be received in order to reserve a seat. Seats are reserved on a first-paid first-reserved basis and are limited to 44 people.

Check No. _____

I authorize Power Line Systems, Inc. to charge my MasterCard Visa for the amount of \$1800. Note that Power Line Systems can only accept MasterCard or VISA credit cards. All attendees will be supplied with a computer, the PLS-CADD software and hardware key to use during the class.

Cardholder Name _____ Signature _____

Card No. _____ Expiration Date _____

Credit Card Billing Address _____

(if different than above) _____

City _____ State _____ Zip _____

Cancellation Policy

Confirmed registrants who do not participate or who cancel after December 21, 2015, will forfeit their entire registration fee. Power Line Systems, Inc. reserves the right to cancel the training session and will refund the entire class registration fee in the unlikely event this happens.