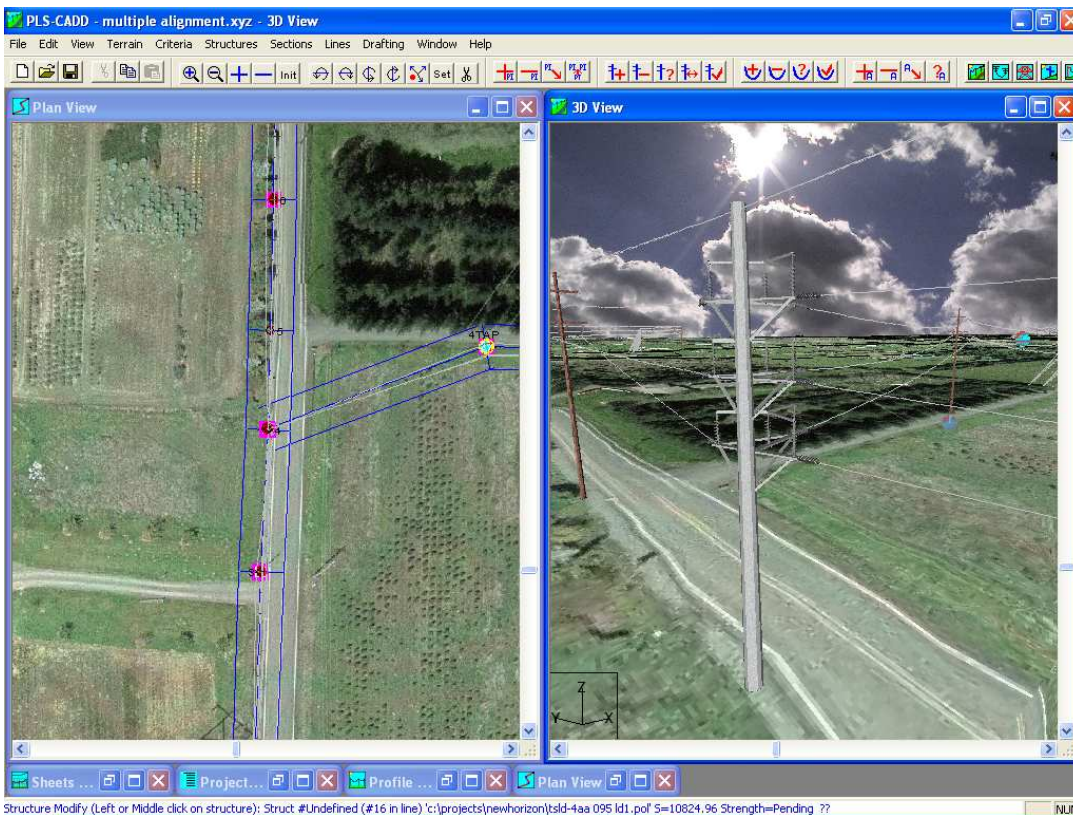


PLS-CADD Class

Engineering and Maintenance of Electrical Transmission Utilities using PLS-CADD



May 17 - 20, 2010

0800 - 1700 Monday - Thursday
Leidschendam, The Netherlands

Hosted by
Fugro Aerial Mapping
Dillenburgsingel 69
2263 HW Leidschendam
Netherlands

POWER LINE[®]
S Y S T E M S · I N C ·

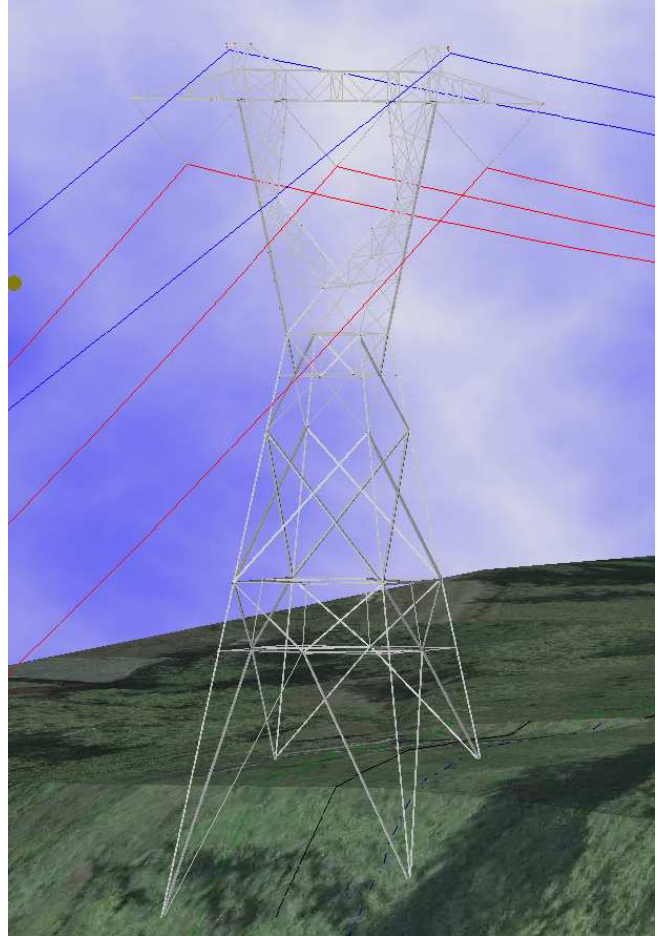
Power Line Systems, Inc.
610 N. Whitney Way
Suite 160
Madison, WI 53705
Phone: (608) 238-2171
Fax: (608) 238-9241
<http://www.powline.com>

**Learn the Industry
Standard in Overhead Line
Design Software**

PLS-CADD is the industry standard in overhead line design and drafting software. This course will teach the attendee how to use PLS-CADD on a project from start to finish, including importing LiDAR survey data, criteria development, structure design, conductor sagging and Plan & Profile drawing development and plotting

Topics Covered

- General Overview
- LiDAR Survey data/Terrain modeling
- Engineering
 - Design criteria including European Norms
 - Sag-tension calculations
 - Clearance calculations
 - Structure calculations
 - Manual spotting and stringing
 - Automatic spotting
- Generating construction documents: Staking tables and Plan & Profile Sheets
- PLS-CADD/LITE
- TOWER and it's integration with PLS-CADD
- Assessing existing lines for rerating and uprating
- Use of Finite Element Sag-Tension when ruling span is not applicable



Who Should Attend?

This course is open to all engineers and technicians whose companies currently use PLS-CADD or are considering purchasing it. At a minimum, the attendee should have some basic understanding of overhead line design concepts as the class focuses on the use of the software and not on the fundamentals of line design. Many advanced topics will also be covered so this course is designed for the new user to the most advanced user.

Cost

The class costs €1900 per person.

More Information

A registration form is on the back of this brochure. Seats are limited to the first 20 registrants. Fugro Aerial Mapping must receive payment and your registration form in order to reserve your seat.

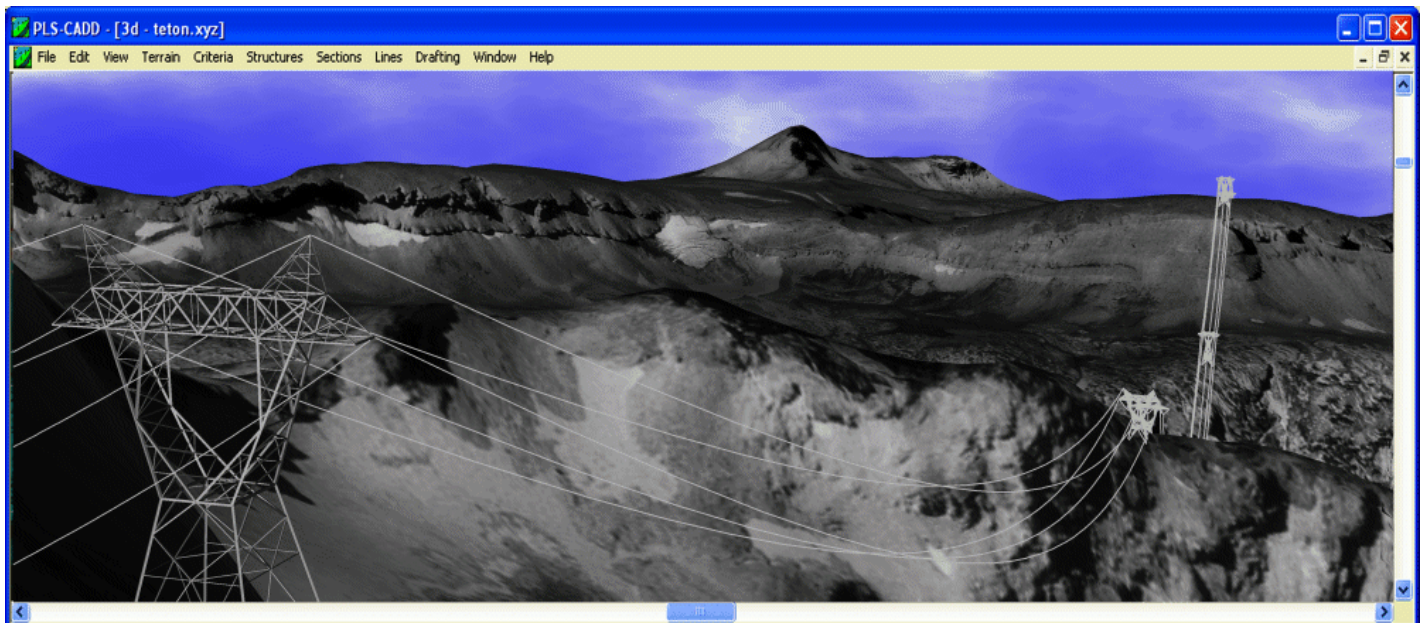
Instructor



The course will be conducted by Otto J. Lynch, P.E., Vice President of Power Line Systems. He has more than 20 years of experience in transmission line design and in the use of PLS-CADD. Otto is a pioneer in the development and use of LiDAR in the transmission line industry, making the first presentation ever to the IEEE in 1993 on the use of LiDAR in accurately modeling as-built conditions of existing transmission lines for rerating purposes. Otto is a registered Professional Engineer and is an active member of many ASCE and IEEE technical committees, including serving as the current Chair of the ASCE Structural Engineering Institute Electrical Transmission Structures Committee. He is also a member of Subcommittee 5 of the National Electric Safety Code.

Details

The class will be held from 0800 to 1700 Monday through Thursday. The training facility will open 15 minutes before class start each day. The course will be conducted in Leidschendam, The Netherlands. Lunch will be provided Monday through Thursday. Attendees are responsible for all other costs incurred including lodging. After registration, registrants will receive a detailed information package covering detailed venue address information, hotel details, travelling possibilities, etc.



Class Materials

Each attendee must provide their own computer. The hardware keys and the latest PLS-CADD software will be provided for the duration of the class. **The initial installation of the hardware key requires administrative privileges which may only be provided by your IT staff.** (See <http://www.powline.com/products/ntdriver.html> for additional details on the hardware key driver that must be installed; this may be installed prior to the class.)



Maarten Bomers
Sales Coordinator Europe
Fugro Aerial Mapping B.V.
Dillenburgsingel 69, 2263 HW Leidschendam /
P.O. Box 3000, 2260 DA Leidschendam, The Netherlands
Telephone: +31 (0)70 31 70776 / Mobile: +31 (0)6 13 17 47 71
Fax: +31 (0)70 31 70750
E-mail: m.bomers@fugro.com / Website: www.fugro-nederland.nl
Trade Register Nr: 27152156 / VAT Nr: NL803757955B01

PLS-CADD Class Registration Form

May 17 - 20, 2010 in Leidschendam, The Netherlands

Each attendee must submit a completed form to register – please print.

Attendee Information

Name (First/Last) _____ Phone _____
Company _____ Fax _____
Address _____ E-Mail _____
_____ State _____
City _____ Country _____ Zip _____

Payment Information

Registration for the class is €1900. Full payment is required prior to the class and must be received in order to reserve a seat. Seats are reserved on a first-paid first-reserved basis and are limited to 20 people. All attendees will be supplied with the PLS-CADD software and hardware key to use during the class.

Billing Information

Upon receipt of completed registration form, an invoice will be sent to the following address (if different from above.)

Name (First/Last) _____ Phone _____
Company _____ Fax _____
Address _____ E-Mail _____
_____ State _____
City _____ Country _____ Zip _____

Cancellation Policy

Confirmed registrants who do not participate or who cancel after April 30, 2010, will forfeit their entire registration fee. Power Line Systems, Inc. and Fugro Aerial Mapping B.V. reserves the right to cancel the training session and will refund the entire class registration fee in the unlikely event this happens.