

TOWER Class

Analysis and Design of Transmission Towers Using the TOWER Software - A Hands-On Class

February 23-26, 2010

Time: 8:30 AM to 4:30 PM
February 23-25 and
8:30 AM to 12:30 PM
February 26

at

Power Line Systems, Inc.
610 N. Whitney Way
Suite 160
Madison, WI 53705

Power Line Systems, Inc.
610 N. Whitney Way
Suite 160
Madison, WI 53705
Phone: (608) 238-2171
Fax: (608) 238-9241
<http://www.powline.com>

POWER LINE[®]
SYSTEMS · INC ·

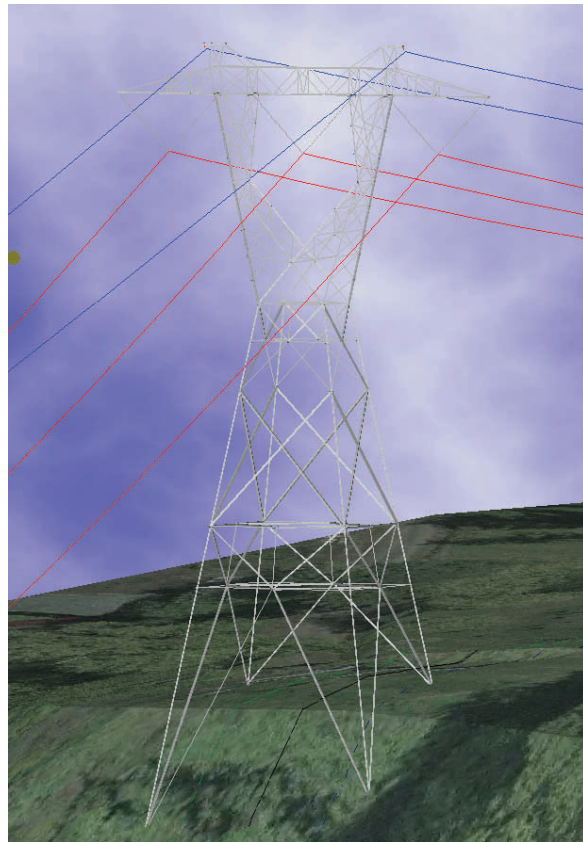
**Learn the Industry
Standard in Overhead Line
Design Software**

TOWER is the most widely used lattice tower analysis and design program in the world today. It's ability to link directly with PLS-CADD, the industry standard in overhead line design and drafting software, makes it the tool of choice for overhead line designers.

This course will teach the attendees how to use TOWER to model lattice steel towers, whether for construction of new lattice tower lines or upgrading, reconductoring, or adding ancillary attachments to existing transmission towers.

Topics Covered

- General Modeling Concepts
- Building and Viewing a Model
- Design Strength
- Loads
- Analysis and Convergence Issues
- Data Review and Tabulation of Output
- Design Functions
- Using TOWER Models in PLS-CADD
- Existing Towers
- Tower Project Management
- Design Checks Beyond TOWER
- Course Conclusion



You have the option of bringing your own notebook computer or using a PLS training computer. The latest TOWER version, a hardware key and a training computer will be provided for use during the course.

Who Should Attend?

This course is open to all engineers and technicians whose companies currently use TOWER and/or PLS-CADD. Each attendee will earn 28 Professional Development Hours for this course.

Since this may be the only comprehensive TOWER class in 2010, register early to avoid missing this opportunity. Please visit our website at <http://www.powline.com/news.html#training> for information about other classes.

Cost

The class costs \$1600 per person.

More Information

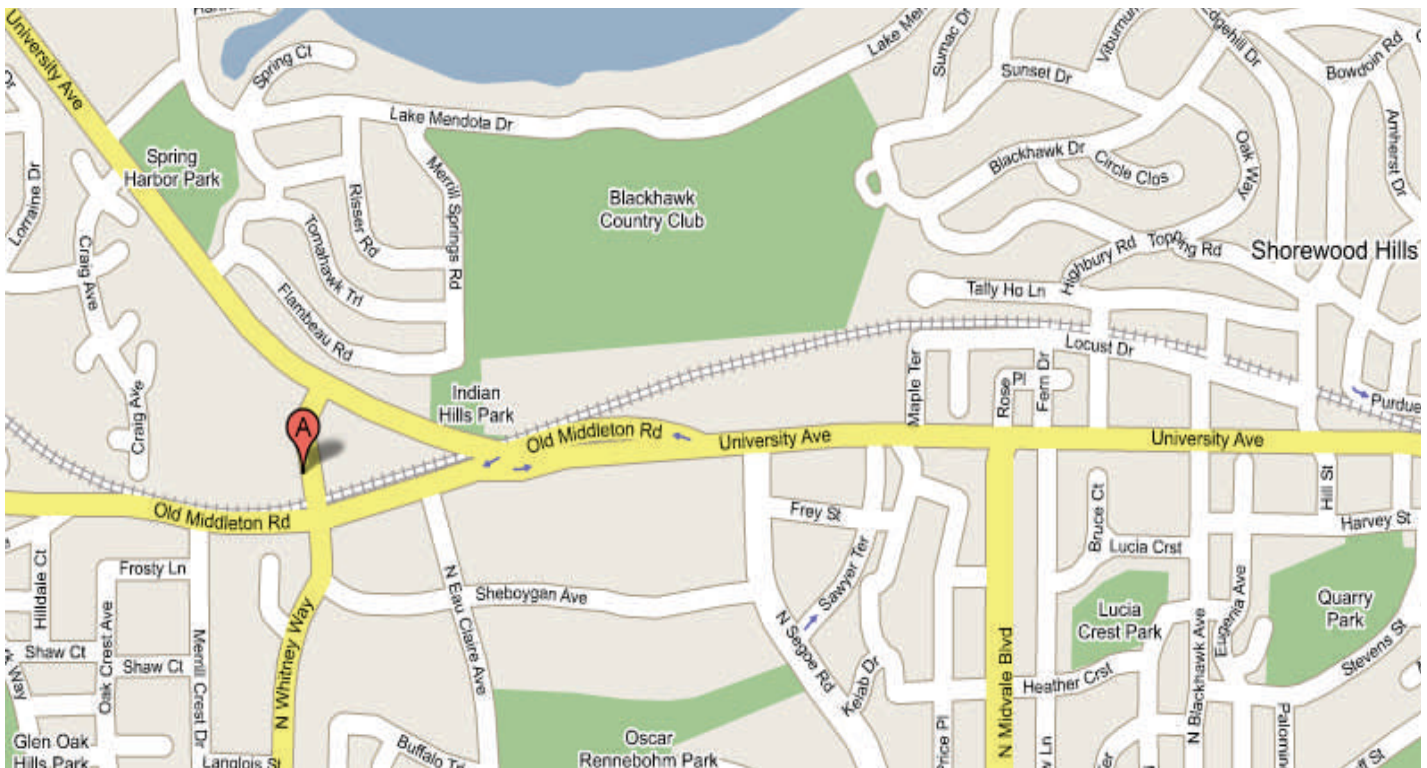
A registration form is on the back of this brochure. Space is limited to the first 24 registrants and we must receive payment in order to reserve your seat.

Instructors

The course will be conducted by Power Line Systems personnel and Bob Nickerson. The instructors are members of the ASCE-10 Committee and are extremely proficient with TOWER and its use in the practical world. Erik Jacobsen, the software developer responsible for TOWER since 1997 will be on hand as well.

Details

The class will be conducted from 8:30 AM to 4:30 PM the first three days, and from 8:30 AM to 12:30 PM on the last day. The class will be held at Power Line Systems corporate headquarters in Madison, Wisconsin (point A in the map below). Lunch will be provided the first three days. Attendees are responsible for all other costs incurred including lodging. Please see <http://www.powline.com/visiting.html> for a detailed map of Power Line Systems location and listings of area hotels.



Class Materials

A PLS training computer will be provided for each attendee, but you may use your own computer if you prefer. In either case, hardware keys and the latest TOWER software will be provided for the duration of the class. If you are bringing your own notebook computer then please have the current version (see <http://www.powline.com/current.html>) installed on your computer with your key working prior to your departure for Madison. **The initial installation of the hardware key requires administrative privileges which may only be provided by your IT staff.**



610 N. Whitney Way
Suite 160
Madison, Wisconsin 53705, USA
Phone: (608) 238-2171
Fax: (608) 238-9241
<http://www.powline.com>
Email: info@powline.com

TOWER Class Registration Form

February 23—26, 2010 in Madison, Wisconsin, USA

Each attendee must submit a completed form to register – please print.

Attendee Information

Name (First/Last) _____ Phone _____
Company _____ Fax _____
Address _____ E-Mail _____
City _____ State _____ Zip _____

Payment Information

Full payment is required prior to the class and must be received in order to reserve a seat for the training. Seats are reserved on a first-paid first-reserved basis and are limited to 25 people.

Check No. _____

I authorize Power Line Systems, Inc. to charge my ___MasterCard ___Visa for the amount of \$1600. Note that Power Line Systems can only accept MasterCard or VISA credit cards. All attendees will be supplied with a computer, the TOWER software and associated hardware key to use during the class.

Card No. _____ Expiration Date _____
Cardholder Name _____ Signature _____
Credit Card Billing Address _____
(if different than above) _____
City _____ State _____ Zip _____

Cancellation Policy

Confirmed registrants who do not participate or who cancel after February 9, 2010, will forfeit their entire registration fee. Power Line Systems, Inc. reserves the right to cancel the training session and will refund the entire class registration fee in the unlikely event this happens.