

# TOWER Class

## Analysis and Design of Transmission Towers Using the TOWER Software - A Hands-On Class

June 5 - 7, 2007

Time: 8:30 AM to 4:30 PM  
June 5 and 6

8:30 AM to 1:00 PM  
June 7

at

Power Line Systems, Inc.

610 N. Whitney Way

Suite 160

Madison, WI 53705

Power Line Systems, Inc.  
610 N. Whitney Way  
Suite 160

Madison, WI 53705

Phone: (608) 238-2171

Fax: (608) 238-9241

<http://www.powline.com>

**POWER LINE**<sup>®</sup>  
S Y S T E M S · I N C ·

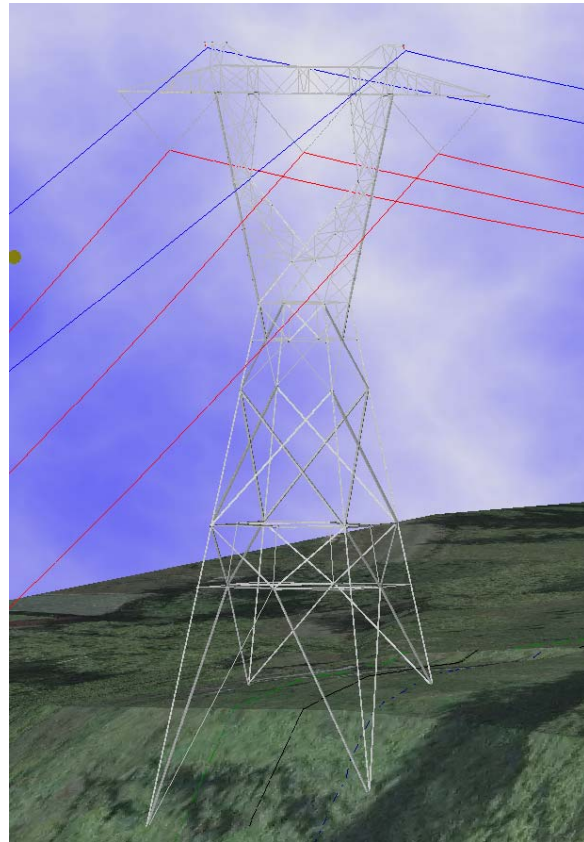
**Learn the Industry  
Standard in Overhead Line  
Design Software**

TOWER is the most widely used lattice tower analysis and design program in the world today. It's ability to link directly with PLS-CADD, the industry standard in overhead line design and drafting software, makes it the tool of choice for overhead line designers.

This course will teach the attendees how to use TOWER to model lattice steel towers, whether for construction of new lattice tower lines or upgrading, reconductoring, or adding ancillary attachments to existing transmission towers.

### **Topics Covered**

- General Modeling Concepts
- Building and Viewing a Model
- Design Strength
- Loads
- Analysis and Convergence Issues
- Data Review and Tabulation of Output
- Design Functions
- Using TOWER Models in PLS-CADD
- Communication Towers — Brief Overview
- Existing Towers
- Tower Project Management
- Design Checks Beyond TOWER
- Course Conclusion



You have the option of bringing your own notebook computer or using a PLS training computer. Hardware keys will be provided, if necessary, and we will provide the latest TOWER version for use during the course.

### **Who Should Attend?**

This course is open to all engineers and technicians whose companies currently use TOWER and/or PLS-CADD.

Since this may be the only comprehensive TOWER training class in 2007, register early and don't miss this opportunity. Please visit our website at

<http://www.powline.com/news.html#TRAINING> for other classes.

### **Cost**

The class costs \$1200 per person if the attendee brings his/her own notebook computer or \$1400 per person if the attendee uses a PLS supplied training computer.

## More Information

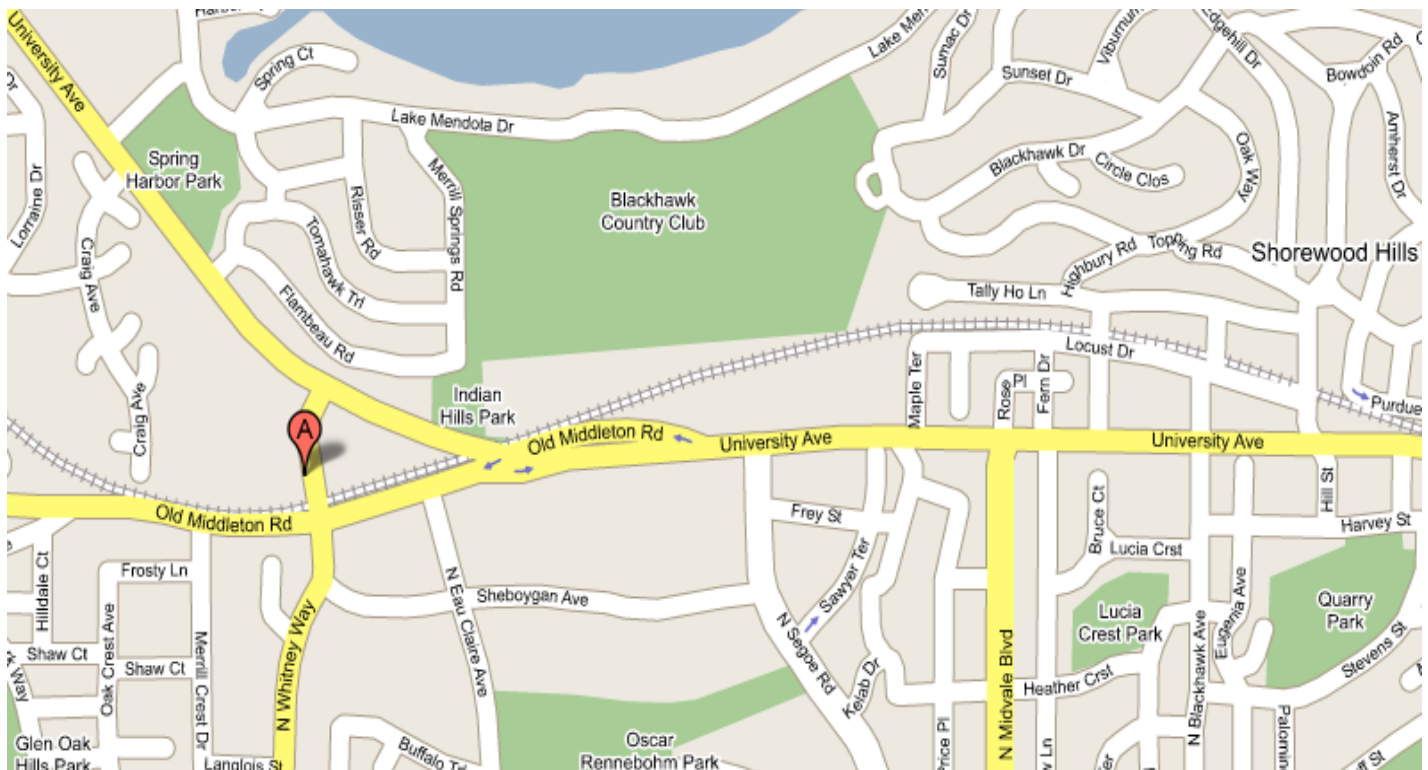
A registration form is on the back of this brochure. Space is limited to the first 24 registrants and we must receive payment in order to reserve your seat.

## Instructors

The course will be conducted by Power Line Systems personnel and Bob Nickerson. The instructors are members of the ASCE-10 Committee and are extremely proficient with TOWER and its use in the practical world. Erik Jacobsen, the software developer responsible for TOWER since 1997 will be on hand as well.

## Details

The class will be conducted from 8:30 AM to 4:30 PM the first two days, June 5 and 6, and from 8:30 AM to 1:00 PM on June 7. The class will be held at Power Line Systems corporate headquarters in Madison, Wisconsin (point A in the map below). Lunch will be provided on the 5th and 6th. Attendees are responsible for all other costs incurred including lodging. Please see <http://www.powline.com/visiting.html> for a detailed map of Power Line Systems location and listings of area hotels. No special arrangements have been made with any of these hotels.



## Class Materials

You have the option of bringing your own notebook computer or using a PLS training computer. Hardware keys will be provided, if necessary, and we will provide the latest TOWER version for use during the course. If you are bringing your own notebook computer then please email Power Line Systems at [support@powline.com](mailto:support@powline.com) to obtain the training version and have this version installed on your computer prior to your departure for Madison.



610 N. Whitney Way  
Suite 160  
Madison, Wisconsin 53705, USA  
Phone: (608) 238-2171  
Fax: (608) 238-9241  
<http://www.powline.com>  
Email: [info@powline.com](mailto:info@powline.com)

## TOWER Class Registration Form

June 5-7, 2007 in Madison, Wisconsin, USA

*Each attendee must submit a completed form to register – please print.*

### Attendee Information

Name (First/Last) \_\_\_\_\_ Phone \_\_\_\_\_  
Company \_\_\_\_\_ Fax \_\_\_\_\_  
Address \_\_\_\_\_ E-Mail \_\_\_\_\_  
\_\_\_\_\_  
City \_\_\_\_\_ State \_\_\_\_\_ Zip \_\_\_\_\_

### Payment Information

Full payment is required prior to the class and must be received in order to reserve a seat for the training. Seats are reserved on a first-paid first-reserved basis and are limited to 25 people.

Check No. \_\_\_\_\_

I authorize Power Line Systems, Inc. to charge my ☐ MasterCard ☐ Visa for the amount of (please circle one) ☐ \$1200 (attendee bringing own notebook) or ☐ \$1400 (PLS will supply training computer). Note that Power Line Systems can only accept MasterCard or VISA credit cards. All attendees will be supplied with the TOWER software and associated hardware key to use during the class.

Card No. \_\_\_\_\_ Expiration Date \_\_\_\_\_  
Cardholder Name \_\_\_\_\_ Signature \_\_\_\_\_  
Credit Card Billing Address \_\_\_\_\_  
(if different than above) \_\_\_\_\_  
City \_\_\_\_\_ State \_\_\_\_\_ Zip \_\_\_\_\_

### Cancellation Policy

Confirmed registrants who do not participate or who cancel after May 8th, 2007, will forfeit their entire registration fee. Power Line Systems, Inc. reserves the right to cancel the training session and will refund the entire class registration fee in the unlikely event this happens.