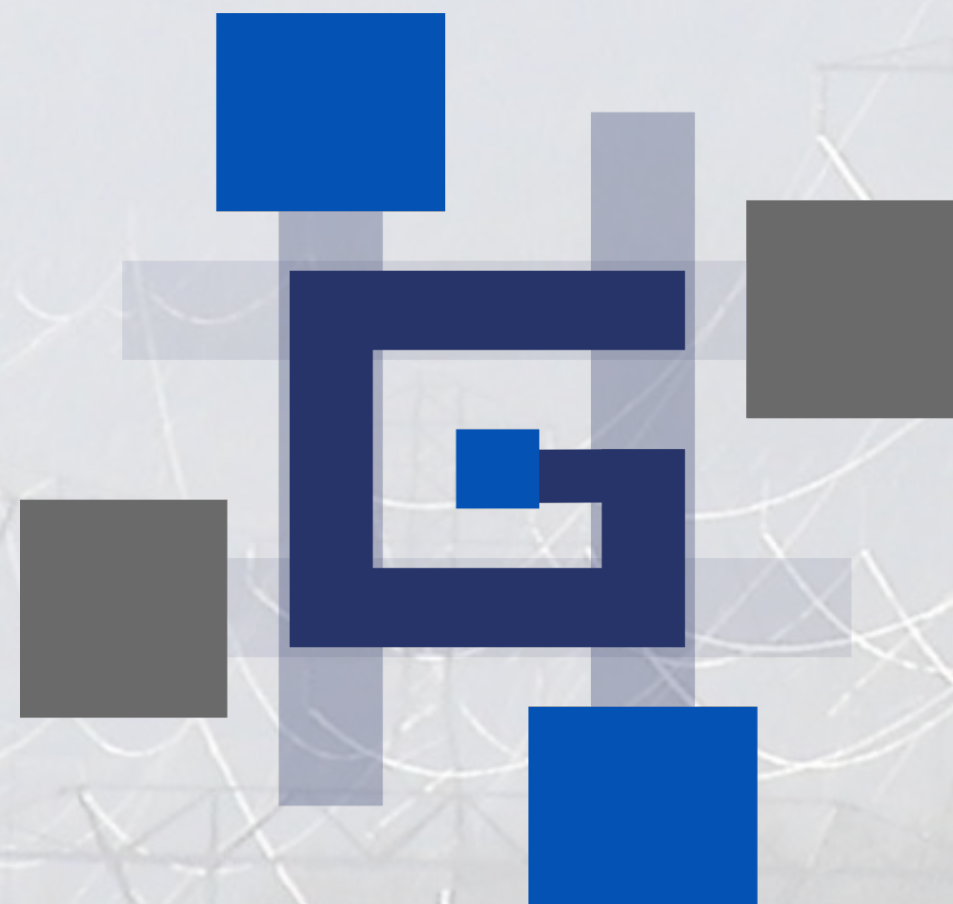


Project Manager



PLS-GRID

Workflow for handling of projects in PLS-GRID Project Manager

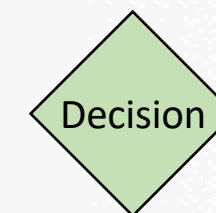
Typical workflow for PLS-GRID

The intent of this document is to introduce the users of our software to the commands and workflows within PLS-GRID and leverage its Project Manager capabilities for working with PLS-CADD, PLS-POLE and TOWER models.

This documents provides insight into:

- Enrolling projects into the PLS-GRID Server
- Creating PLS-CADD projects from Template projects to enforce company/client standards
- Working with projects once they are enrolled in the PLS-GRID Project Manager, introducing the concepts of:
 - Get Project
 - Check out Project
 - Check In Project

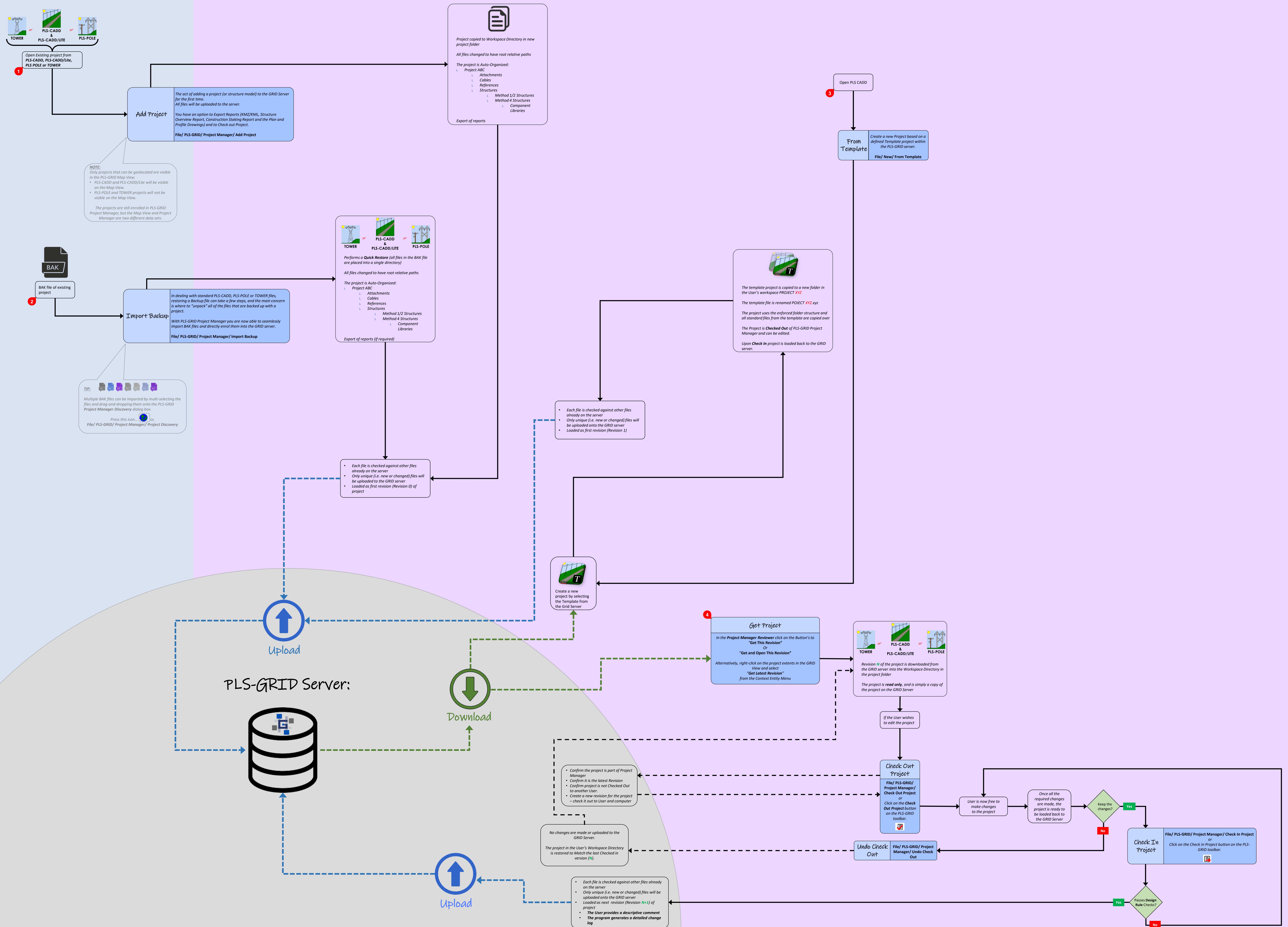
KEY:



- Back to Main Process workflow

Existing storage locations:
Company servers, or User's computer

User's Workspace Directory:



Enrolling Projects into the PLS-GRID Server: *Add Project*

Existing storage locations:
Company servers, or various project directories on the User's computer



1
Open Existing project from
PLS-CADD, PLS-CADD/Lite,
PLS POLE or TOWER

User's Workspace Directory:



Project copied to Workspace Directory in new project folder

All files changed to have root relative paths

The project is Auto-Organized:

- L Project ABC
 - L Attachments
 - L Cables
 - L References
 - L Structures
 - L Method 1/2 Structures
 - L Method 4 Structures
 - L Component Libraries

Export of reports

Add Project

The act of adding a project (or structure model) to the GRID Server for the first time.
All files will be uploaded to the server.

You have an option to Export Reports (KMZ/KML, Structure Overview Report, Construction Staking Report and the Plan and Profile Drawings) and to Check out Project.

File/ PLS-GRID/ Project Manager/ Add Project

PLS-GRID Server:



- Each file is checked against other files already on the server
- Only unique (i.e. new or changed) files will be uploaded to the GRID server
- Loaded as first revision (Revision 0) of project

NOTE:

Only projects that can be geolocated are visible in the PLS-GRID Map View.

- PLS-CADD and PLS-CADD/Lite will be visible on the Map View.
- PLS-POLE and TOWER projects will not be visible on the Map View.

The projects are still enrolled in PLS-GRID Project Manager, but the Map View and Project Manager are two different data sets.

Enrolling Projects into the PLS-GRID Server: *Import Backup*

Existing storage locations:
Company servers, or various project
directories on the User's computer

User's Workspace Directory:

PLS-GRID Server:



BAK file of existing
project

2

Import
Backup

In dealing with standard PLS-CADD, PLS-POLE or
TOWER files, restoring a Backup file can take a few
steps, and the main concern is where to "unpack"
all of the files that are backed up with a project.

With PLS-GRID Project Manager you are now able
to seamlessly import BAK files and directly enrol
them into the GRID server.

File/ PLS-GRID/ Project Manager/ Import Backup



Performs a **Quick Restore** (all files in the BAK file
are placed into a single directory)

All files changed to have root relative paths

The project is Auto-Organized:

- L Project ABC
 - L Attachments
 - L Cables
 - L References
 - L Structures
 - L Method 1/2 Structures
 - L Method 4 Structures
 - L Component Libraries

Export of reports (if required)




- Each file is checked against other files
already on the server
- Only unique (i.e. new or changed) files will
be **uploaded** onto the GRID server
- Loaded as first revision (Revision 0) of
project

TIP:

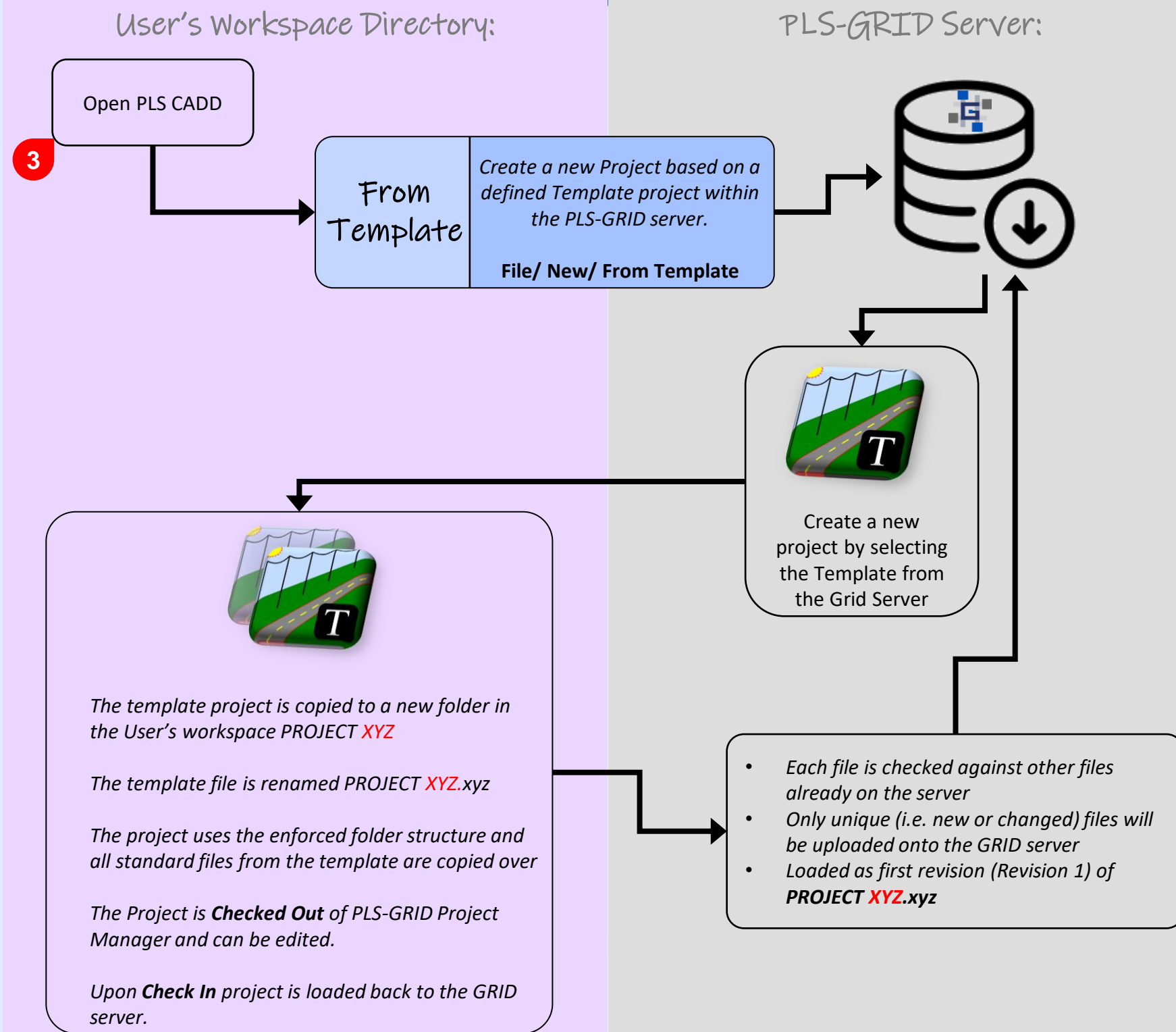


Multiple BAK files can be imported by multi-selecting the
files and drag-and-dropping them onto the PLS-GRID Project
Manager Discovery dialog box.

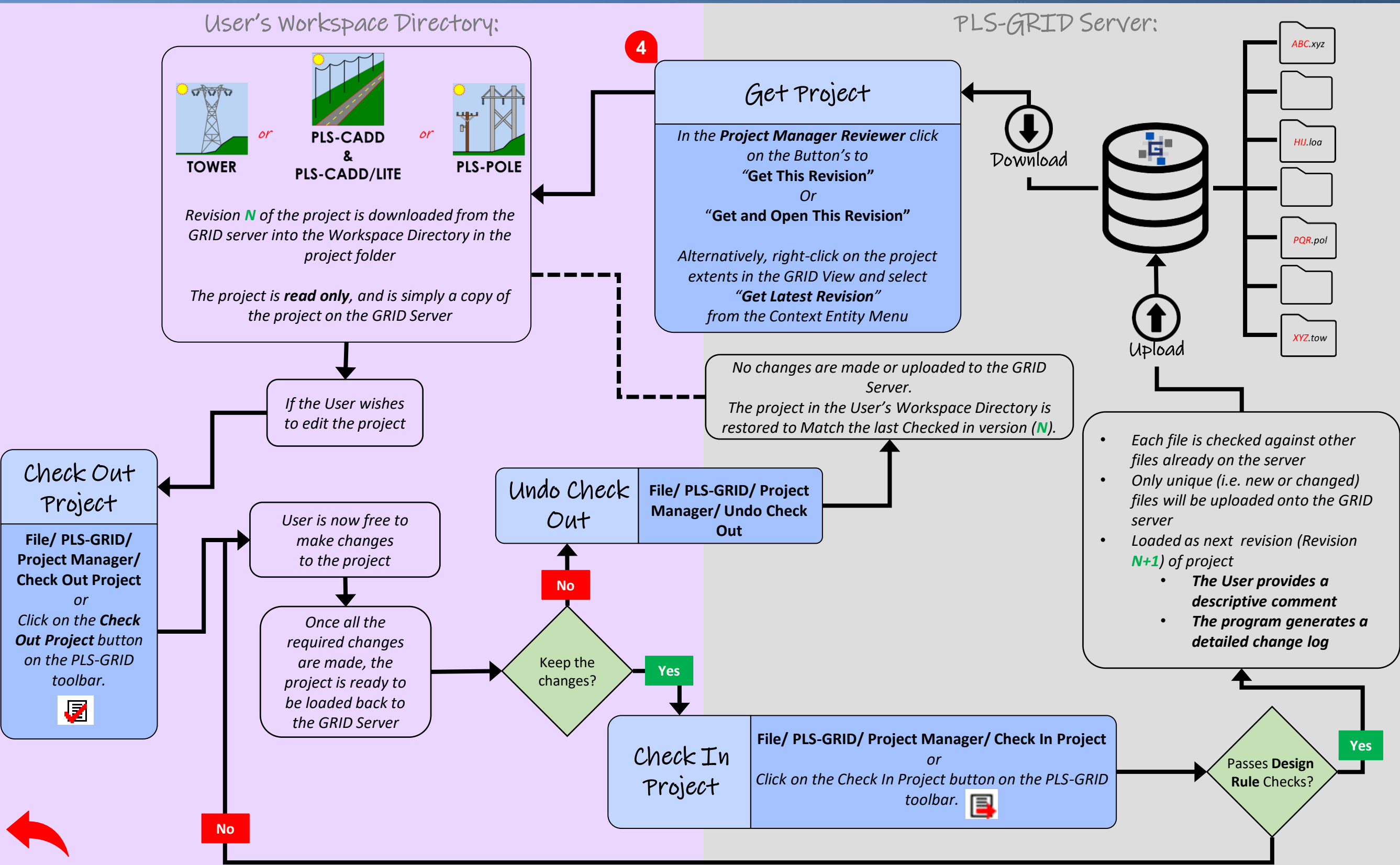
Press this icon...  or,
File/ PLS-GRID/ Project Manager/ Project Discovery

Migrating Projects onto the PLS-GRID Server: *Create project from Template*

Existing storage locations:
Company servers, or various project
directories on the User's computer



Working with Projects already on the PLS-GRID Server: *GET, CHECK OUT and CHECK IN Project*





PLS-GRID

See www.powerlinesystems.com for more information

Contact info@powerlinesystems.com for additional information

Contact sales@powerlinesystems.com for quotation

Contact support@powerlinesystems.com for technical inquiries

POWER LINE[®]

S Y S T E M S

Madison, Wisconsin 53719, USA

Phone: 608- 238-2171

Fax: 608-238-9241

info@powline.com

www.powerlinesystems.com