

TOWER Seminar

Analysis and Design of Transmission Towers Using the TOWER Software - A Hands-On Class

April 13 - 17, 2026

1:00 PM to 5:30 PM Monday
8:30 AM to 4:30 PM Tues.- Thur.
8:30 AM to 11:30 AM Friday

at
Power Line Systems
5400 King James Way
Suite 300
Madison, WI 53719

Power Line Systems
5400 King James Way
Suite 300
Madison, WI 53719
Phone: (608) 238-2171
Fax: (608) 238-9241
<https://www.powerlinesystems.com>

POWER LINE[®]
S Y S T E M S

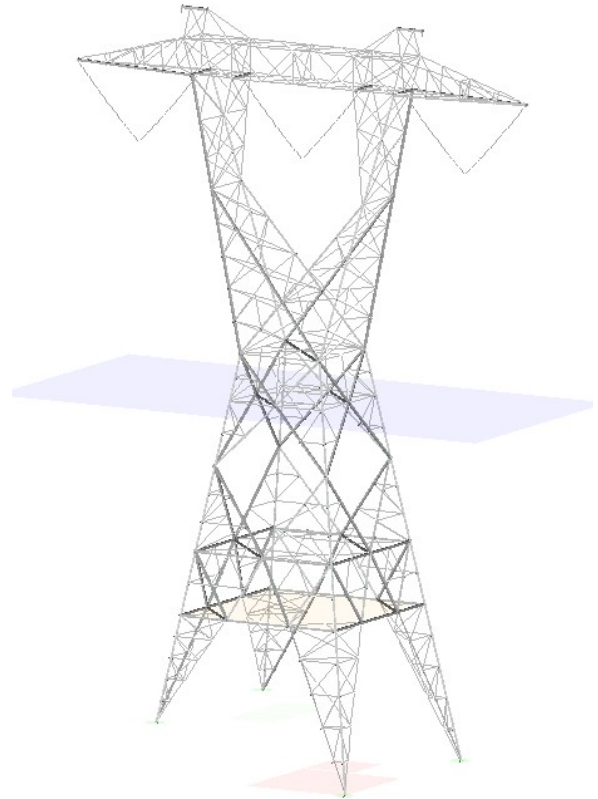
**Learn the Industry
Standard in Overhead Line
Design Software**

TOWER is the most widely used lattice tower analysis and design program in the world. Its ability to link directly with PLS-CADD, the industry standard in overhead line design and drafting software, makes it the tool of choice for tower designers and overhead line designers.

This course will teach attendees how to use TOWER to model steel lattice structures, whether for construction of new lattice tower lines, analysis of existing towers or upgrading of existing towers. The course examples will utilize real life structure fabrication drawings and cover implementing provisions of the ASCE 10-15 design standard.

Topics Covered

- General Lattice Tower Modeling Concepts
- Reading Fabrication and Erection Drawings
- Building a TOWER Model
 - Joints, Members, Connections & Insulators
- Wind and Wire Loads
- ASCE 10-15 Design Strength Checks
 - Compression, Tension, Shear, Bearing and Rupture
- Analysis and Convergence Issues
- Design Functions
- Understanding and Interpreting Results
- Body and Leg Extension Design and Management using Family Manager
- Structure and Member Optimization
- Common Modeling Errors and Pitfalls
- Using TOWER models efficiently in PLS-CADD



Who Should Attend?

This course is open to all engineers and technicians whose companies currently use TOWER and/or PLS-CADD or are considering purchasing it. The attendee should have a basic understanding of structural design concepts. Previous experience with TOWER is not required but is recommended.

Cost

The class costs \$2300 per person.

More Information

A registration form is on the back of this brochure. Seats are limited to the first 25 registrants. We must receive payment and your registration form in order to reserve your seat.

Please see our web site at <https://www.powerlinesystems.com/classes> for other classes.

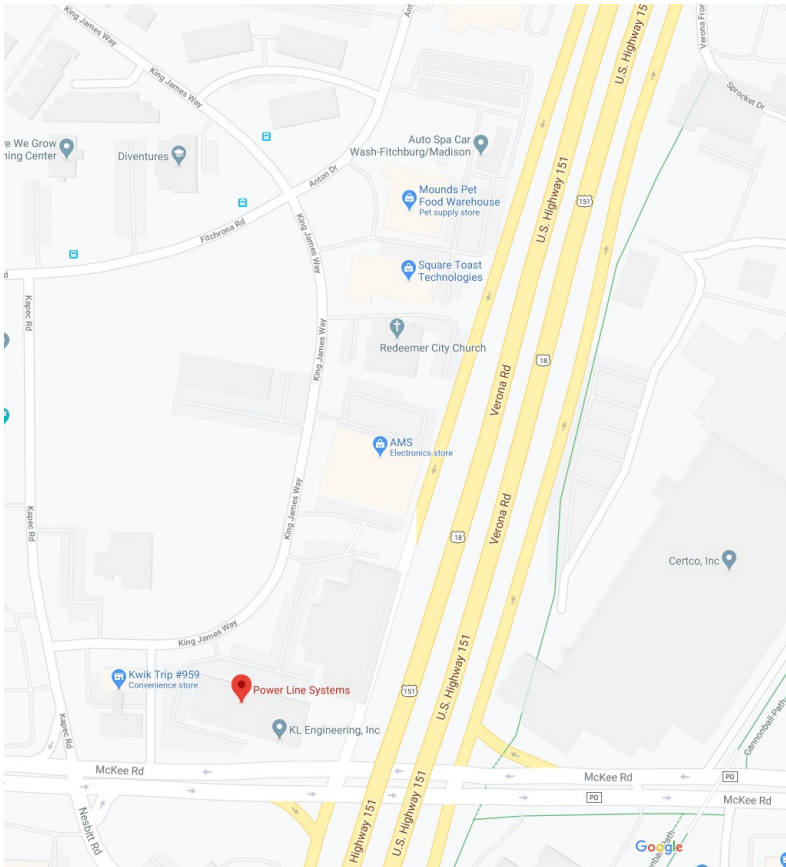


Instructor

The course will be conducted by Tim Cashman, P.E. of Power Line Systems. He has more than 35 years of experience in transmission line design ranging from voltages of 69kV through 500kV as well as extensive experience using the PLS software suite. Tim is an active member of the ASCE 10 *Design of Latticed Steel Transmission Structures* committee and is extremely knowledgeable in the use of TOWER and its real world application.

Details

The class will be held from 1:00 PM to 5:30 PM Monday, 8:30 AM to 4:30 PM Tuesday through Thursday and from 8:00 AM to 11:30 AM on Friday (training room opens 15 minutes before class start each day). The course will be conducted at Power Line Systems headquarters in Madison, Wisconsin (see map below). Lunch will be provided Tuesday through Thursday. Attendees are responsible for all other costs incurred including lodging. Please see <https://www.powline.com/visiting.html> for a detailed map of Power Line Systems location and listings of area hotels.



Computers and Software Provided

This is a 'hands-on' class where attendees will be learning by actually using PLS-CADD. A computer and the latest PLS-CADD software will be provided by Power Line Systems for each attendee for the duration of the class.

Any audio or video recording of the class is strictly prohibited.



5400 King James Way, Suite 300
Madison, Wisconsin 53719, USA
Phone: (608) 238 2171 Fax: (608) 238-9241
<https://www.powerlinesystems.com>
info@powerlinesystems.com

TOWER Seminar Registration Form

April 13 - 17, 2026 in Madison, Wisconsin, USA

Registration

Registration for the course can be made by sending the Attendee Information to training@powerlinesystems.com or calling 608-238-2171.

Attendee Information

Name (First/Last)	_____	Phone	_____
Company	_____	Fax	_____
Address	_____	E-Mail	_____

City	_____	State	_____ Zip _____

Payment Information

Full payment is required prior to the class and must be received in order to reserve a seat. Seats are reserved on a first-paid first-reserved basis and are limited to 25 people.

Payments are made exclusively online using the Bentley Virtuosity system at <https://en.virtuosity.com/power-line-systems>. Once on the webpage, select the appropriate PLS-CADD Online class from the pulldown menu, select the quantity and add to your cart. Then checkout and pay from your cart.

Payments can not be made via a purchase order. Payment is only made via the Virtuosity system.

Cancellation Policy

Confirmed registrants who do not participate or who cancel after March 27, 2026, will forfeit their entire registration fee. Power Line Systems reserves the right to cancel the training session and will refund the entire class registration fee in the unlikely event this happens.