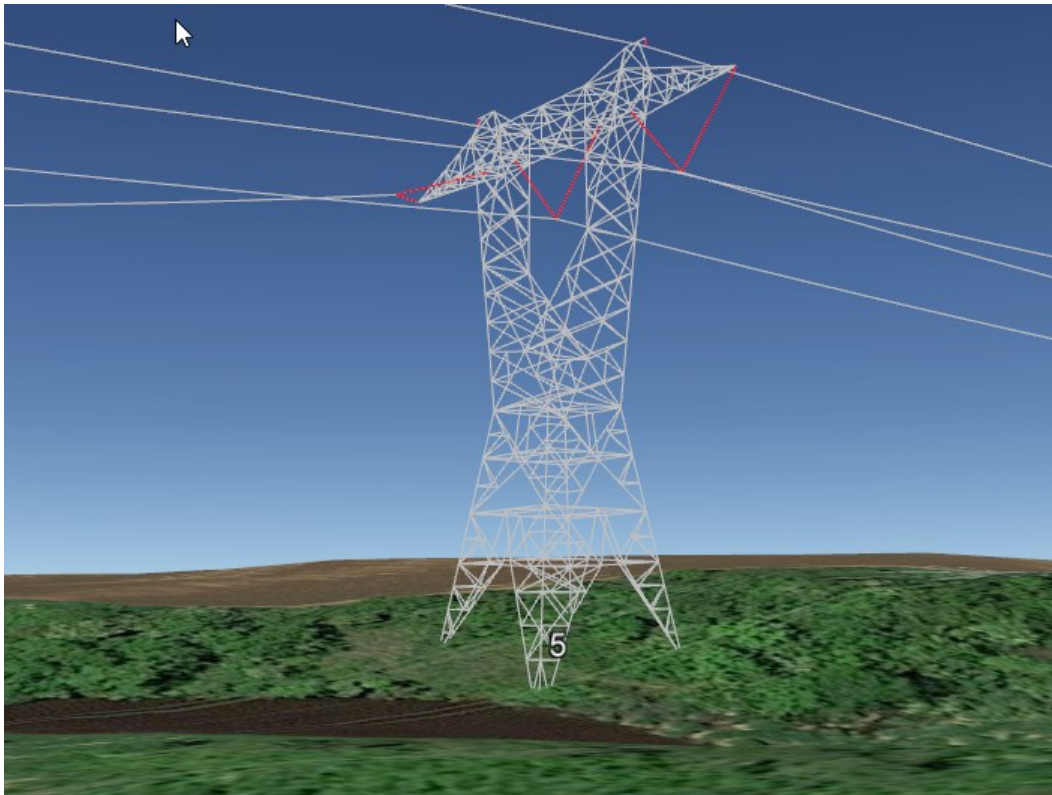


# Advanced PLS-CADD Online Course

## Advanced Topics for Design of Overhead Transmission and Distribution Lines using PLS-CADD



April 4 - 8, 2022

8:00 AM to 12:00 - 12:15 PM

Monday - Friday

Held Online via Zoom Meeting

**POWER LINE**<sup>®</sup>  
S Y S T E M S

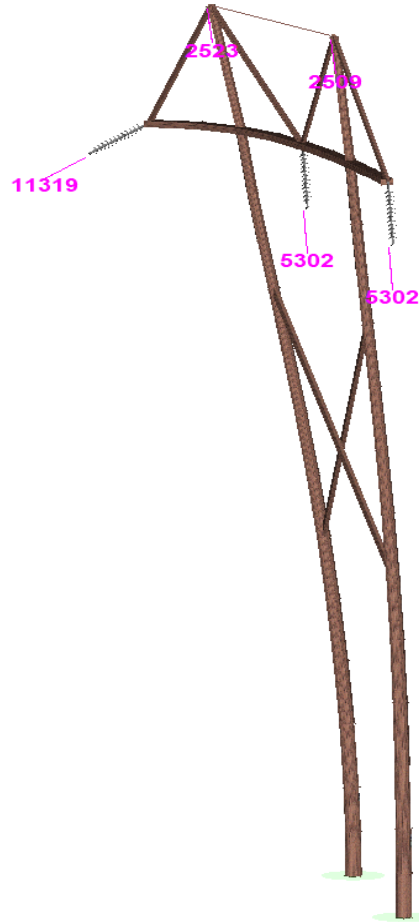
Power Line Systems  
5400 King James Way  
Suite 300  
Madison, WI 53719  
Phone: (608) 238-2171  
Fax: (608) 238-9241  
<http://www.powerlinesystems.com>

**Learn the Industry  
Standard in Overhead Line  
Design Software**

PLS-CADD is the industry standard in overhead line design and drafting software. This course will explore more advanced topics in PLS-CADD and PLS-POLE. The attendees will learn how to utilize and apply these advanced topics to their transmission or distribution projects and become more proficient in the use of the software.

### Topics Covered

- Finite Element
  - RS vs FE comparisons and requirements
  - Clipped vs unclipped insulators
  - Structural analysis (Levels 1, 2, 3 & 4)
  - Unbalanced loadings
  - Equalizing tensions
  - Taps & floating dead ends
- PLS-CADD
  - Circuits
  - Electrical features—Line constants, EMF, lightning protection
  - Graphical sagging
  - Jumpers
  - Bundled conductors
- PLS-POLE
  - Use of framings
  - Troubleshooting convergence issues
  - Modeling complex structures
  - Wood pole defects & more



### Who Should Attend?

This course is open to all engineers and technicians whose companies currently use PLS-CADD. The intended audience is someone who currently designs transmission or distribution lines in PLS-CADD and wants to learn and apply more advanced features to improve their work.

### Prerequisite

Basic PLS-CADD training course or equivalent experience.

### Cost

The class costs \$2000 per person.

### More Information

A registration form is on the back of this brochure. Seats are limited to the first 25 registrants. We must receive payment and your registration form in order to reserve your seat.

Please see our web site for other classes:

<https://www.powerlinesystems.com/onlinetraining>

<https://www.powerlinesystems.com/classes>

## Instructors



The course will be conducted by Jesse Kohler, P.E. and Tim Cashman, P.E., Power Line Systems. The instructors have more than 45 years of combined experience in transmission line design ranging from voltages of 69kV through 500kV and using the PLS software suite. Both instructors are registered Professional Engineers. Jesse is an active member of the IEEE Power Energy Society and currently sits on Subcommittee 4 of the NESC. Tim is an active member of ASCE and a member of the ASCE 10 and ETS Conference Steering Committees.



## Details

- The class will be held from 8:00 AM to 12:00 - 12:15 PM (Central Daylight Time Zone CDT UTC-5) Monday through Friday via a Zoom web conference meeting.
- This online variant of our in-person advanced course will be a lecture and assignment style format as opposed to the more guided hands-on approach our in-person course offers, but will still give students the opportunity to learn the software through using it to complete hands-on project assignments.
- Each day the course will consist of a short QA session to recap the previous day, followed by a 4 hour lecture covering the various topics listed on the previous page as well as detailed example walkthroughs using actual project data. After the lecture on Monday through Thursday the class will be given an assignment that covers what was shown in the lecture. Students can complete the assignments at their own pace and submit their results to the technical support staff of Power Line Systems for review and comment. Should students have questions or require any assistance in completing their assignments they can submit their backup files and ask questions to our technical support staff via email or phone where they will be given priority assistance. Additionally Power Line Systems' support staff will hold a 1 hour video conference call from 4:00 PM to 5:00 PM to offer face-face assistance and answer any questions in an open forum manner. Friday will comprise solely of a lecture. Plan on training sessions running a little past 12:00 some days, and ideally reserve afternoons for working on assignments.
- Upon completion of the course students will be given a certificate of completion good for 20 professional development hours. (20 PDH's)

## Requirements

- Create a Zoom account and supply the account name/email address to Power Line Systems.
- A web camera must be installed and used to access the Zoom meeting.
- Ability to access a Google Drive link to download example files and course material.

## Software & Training Material Provided

This is a 'hands-on' class where attendees will be learning by actually using PLS-CADD and PLS-POLE. The latest PLS-CADD software will be provided by Power Line Systems for each attendee for the duration of the class. If the attendee wishes to use their own software they must be using the latest version and it is recommended to have the following programs/modules; PLS-CADD w/ Optimum Spotting, SAPS, and PLS-POLE/Wood/Steel. Otherwise it is recommended to use the provided training software.

*\*Any audio or video recording of the class is strictly prohibited.*



5400 King James Way, Suite 300  
Madison, Wisconsin 53719, USA  
Phone: (608) 238 2171 Fax: (608) 238-9241  
http://www.powerlinesystems.com  
info@powerlinesystems.com

# Advanced PLS-CADD Online Class Registration Form

April 4 - 8, 2022 in Madison, Wisconsin, USA

*Each attendee must submit a completed form to register – please print.*

*Please email completed forms to **training@powerlinesystems.com** or fax to **(608) 238-9241***

## Attendee Information

Name (First/Last) \_\_\_\_\_ Phone \_\_\_\_\_  
Company \_\_\_\_\_ Fax \_\_\_\_\_  
Address \_\_\_\_\_ E-Mail \_\_\_\_\_  
City \_\_\_\_\_ State \_\_\_\_\_ Zip \_\_\_\_\_

## Payment Information

Full payment is required prior to the class and must be received in order to reserve a seat. Seats are reserved on a first-paid first-reserved basis and are limited to 25 people.

Check No. \_\_\_\_\_

I authorize Power Line Systems to charge my \_\_\_MasterCard \_\_\_Visa for the amount of \$2000. Note that Power Line Systems can only accept MasterCard or VISA credit cards. All attendees will be supplied with the PLS-CADD & PLS-POLE software to use during the class and a Google Drive download link for other course materials and files.

Cardholder Name \_\_\_\_\_ Signature \_\_\_\_\_  
Card No. \_\_\_\_\_ Expiration Date \_\_\_\_\_  
CVC No. \_\_\_\_\_

Credit Card Billing Address \_\_\_\_\_  
(if different than above) \_\_\_\_\_  
City \_\_\_\_\_ State \_\_\_\_\_ Zip \_\_\_\_\_

## Cancellation Policy

Confirmed registrants who do not participate or who cancel after March 7, 2022, will forfeit their entire registration fee. Power Line Systems reserves the right to cancel the training session and will refund the entire class registration fee in the unlikely event this happens.