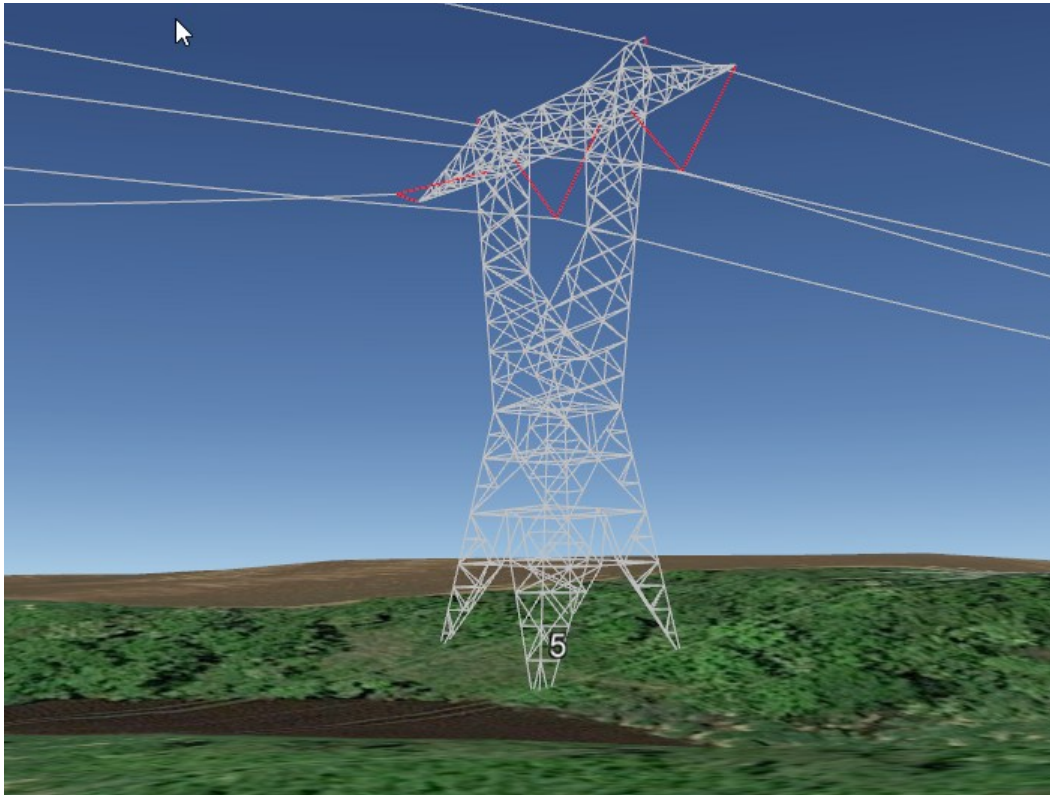


Advanced PLS-CADD Seminar

Advanced Topics for Design of Overhead Transmission and Distribution Lines using PLS-CADD



POWER LINE[®]
S Y S T E M S

April 20 - 24, 2026

1:00 PM to 5:30 PM Monday
8:30 AM to 4:30 PM Tues. - Thur.
8:00 AM to 11:30 AM Friday

at
Power Line Systems
5400 King James Way
Suite 300
Madison, WI 53719

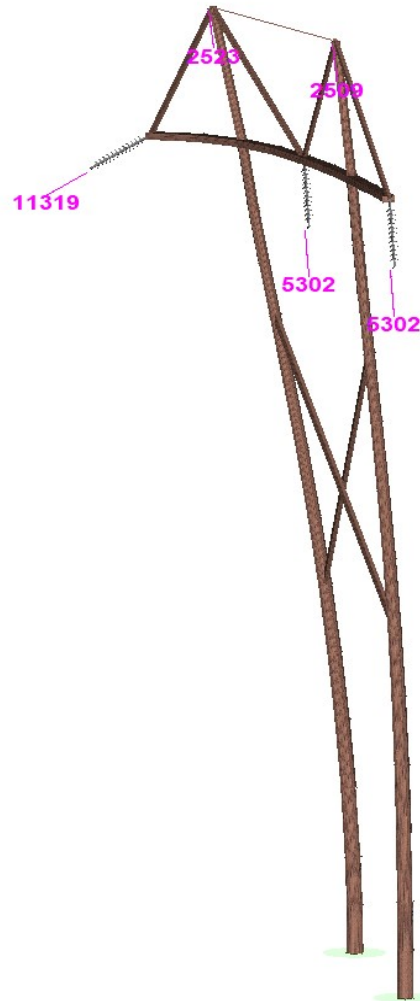
Power Line Systems
5400 King James Way
Suite 300
Madison, WI 53719
Phone: (608) 238-2171
Fax: (608) 238-9241
<http://www.powerlinesystems.com>

**Learn the Industry
Standard in Overhead Line
Design Software**

PLS-CADD is the industry standard in overhead line design and drafting software. This course will explore more advanced topics in PLS-CADD and PLS-POLE. The attendees will learn how to utilize and apply these advanced topics to their transmission or distribution projects and become more proficient in the use of the software.

Topics Covered

- Finite Element
 - Ruling Span & Finite Element analysis
 - Clipped vs unclipped insulators
 - Structural analysis (Levels 1, 2, 3 & 4)
 - Structure loads under RS & FE
 - Intact, broken wires, construction & maintenance, wind directions
 - Equalizing tensions
 - Taps & floating dead ends
- PLS-CADD
 - Circuits
 - Electrical features—Line constants, EMF, lightning protection
 - Graphical sagging
 - Jumpers
- PLS-POLE
 - Use of framings
 - Troubleshooting convergence issues
 - Modeling complex structures
 - Wood pole defects & more
- And more



Who Should Attend?

This course is open to all engineers and technicians whose companies currently use PLS-CADD. The intended audience is someone who currently designs transmission or distribution lines in PLS-CADD and wants to learn and apply more advanced features to improve their work.

Prerequisite

Basic PLS-CADD training course or equivalent experience.

Cost

The class costs \$2400 per person.

More Information

A registration form is on the back of this brochure. Seats are limited to the first 30 registrants. We must receive payment and your registration form in order to reserve your seat.

Please see our web site at <http://www.powerlinesystems.com/classes> for other classes.

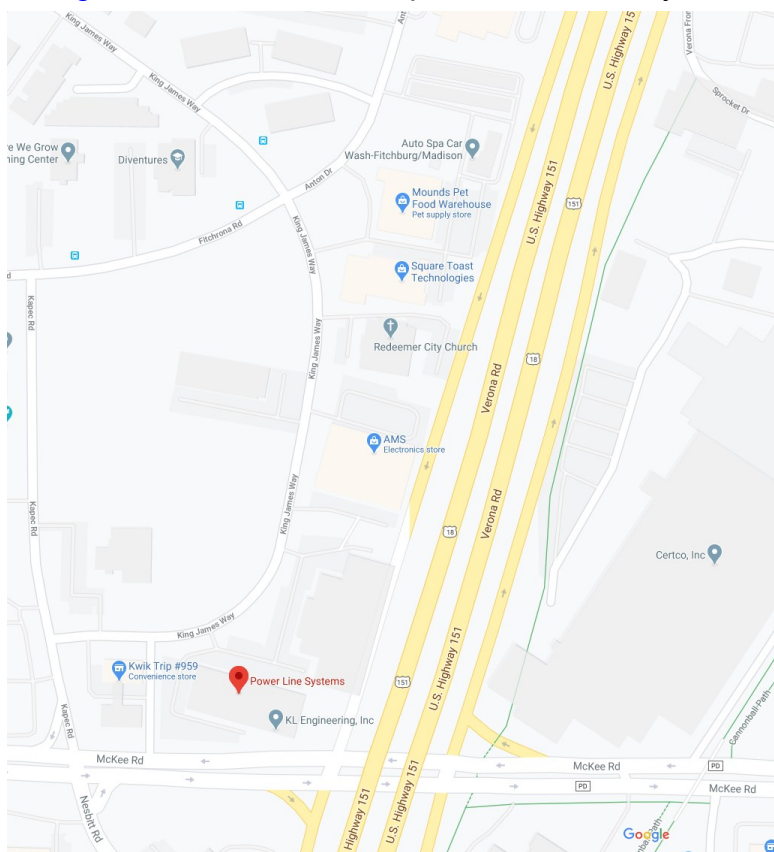


Instructors

The course will be led by Tim Cashman, P.E., Power Line Systems along with the help of other technical support staff. He has more than 35 years of experience in overhead line design ranging from 69kV through 500kV and using the PLS software suite. Tim is a registered Professional Engineer, is an active member of ASCE and is a member of the ASCE 10 standard committee. In addition to technical support he also performs software testing, participates in the development of new software features, and conducts TOWER training courses. He has an extreme in-depth knowledge of the software's functionality and implementation.

Details

The class will be held from 1:00 PM to 5:30 PM Monday, 8:30 AM to 4:30 PM Tuesday through Thursday and from 8:00 AM to 11:30 AM on Friday (training room opens 15 minutes before class start each day). The course will be conducted at Power Line Systems headquarters in Madison, Wisconsin (see map below). Lunch will be provided Tuesday through Thursday. Attendees are responsible for all other costs incurred including lodging. Please see <https://www.powline.com/visiting.html> for a detailed map of Power Line Systems location and listings of area hotels.



Computers and Software Provided

This is a 'hands-on' class where attendees will be learning by actually using PLS-CADD. A computer, software license, and the latest PLS software will be provided by Power Line Systems for each attendee for the duration of the class.

Any audio or video recording of the class is strictly prohibited.



5400 King James Way, Suite 300
Madison, Wisconsin 53719, USA
Phone: (608) 238 2171 Fax: (608) 238-9241
<http://www.powerlinesystems.com>
info@powerlinesystems.com

Advanced PLS-CADD Seminar Registration Form

April 20 - 24, 2026 in Madison, Wisconsin, USA

Registration

Registration for the course can be made by sending the Attendee Information to training@powerlinesystems.com or calling 608-238-2171.

Attendee Information

Name (First/Last)	_____	Phone	_____
Company	_____	Fax	_____
Address	_____	E-Mail	_____

City	_____	State	_____ Zip _____

Payment Information

Full payment is required prior to the class and must be received in order to reserve a seat. Seats are reserved on a first-paid first-reserved basis and are limited to 25 people.

Payments are made exclusively online using the Bentley Virtuosity system at <https://en.virtuosity.com/power-line-systems>. Once on the webpage, select the appropriate PLS-CADD Online class from the pulldown menu, select the quantity and add to your cart. Then checkout and pay from your cart.

Payments can not be made via a purchase order. Payment is only made via the Virtuosity system.

Cancellation Policy

Confirmed registrants who do not participate or who cancel after March 1, 2026, will forfeit their entire registration fee. Power Line Systems reserves the right to cancel the training session and will refund the entire class registration fee in the unlikely event this happens.