



POWER-VIEW

Intelligent KMZ Files (iKMZ)
 Modern Construction Packages
 Real Time Construction Status

Madison – Hinds 230kV Transmission Line Project
 Madison, Mississippi



Presentation By:

Kurt M. Traub, P.E.
 Vice President of T & D Line Engineering
 Ampirical // Mandeville, LA
ktraub@ampirical.com

ASSEMBLY LIST

ITEM	QTY	ASSEMBLY DRAWING
1	1	DEL-T-2P-S
2	1	DEL-T-2-S
3	2	DEL-INSUL-TABLE-1
4	1	DEL-INSUL-TABLE-2
5		
6		

REFERENCE DRAWINGS

ITEM	QTY	REFERENCE DRAWING
7	1	DEL-T-2P-S
8		DEL-T-2-S
9		DEL-INSUL-TABLE-1
10	1	FOUNDATION TOP T.R.D.
11		FOUNDATION T.R.D.

NOTES:
 (1) For General Notes, See Dep. 100000.

TABLE 1
 VARIABLE DIMENSIONS & ROL. DIMS.

	69 kV	161 kV	230 kV
H	12'-0"	13'-0"	13'-0"
SS	8'-3"	13'-0"	14'-0"
V	8'-0"	8'-0"	8'-10"
L	9'-3"	8'-4"	11'-10"
HC	8'-2"	7'-2"	8'-0"

STRUCTURE INFO:
 STATION: 150+05.8
 LINE AREA: 0010000
 DRAWING NAME: A/D 8P2-3 230
 POLE CLASS LENGTH (FT): 15/110
 TOWER MATERIAL: 30000
 EMBEDMENT DEPTH (FT): 10
 FOUNDATION TYPE: EMB

DRAWINGS & IMAGES:
 DRAWING DWG: DEL-T-2P-S
 DRAWING DWG: DEL-T-2-S
 FOUNDATION DWG: 10230000.EDE
 POLE FABRICATION DWG: 27000000.PDF

NOTES:
 (1) For General Notes, See Dep. 100000.

UPDATES:
 Update Status

Traditional T-Line Construction Package

4" thick binder full of paper (537 pages)

Construction packages are typically divided by framing drawings, insulator assembly drawings, phasing drawings, sag charts, steel/concrete detail drawings, etc. This makes it difficult to find what you are looking for on a structure by structure basis.

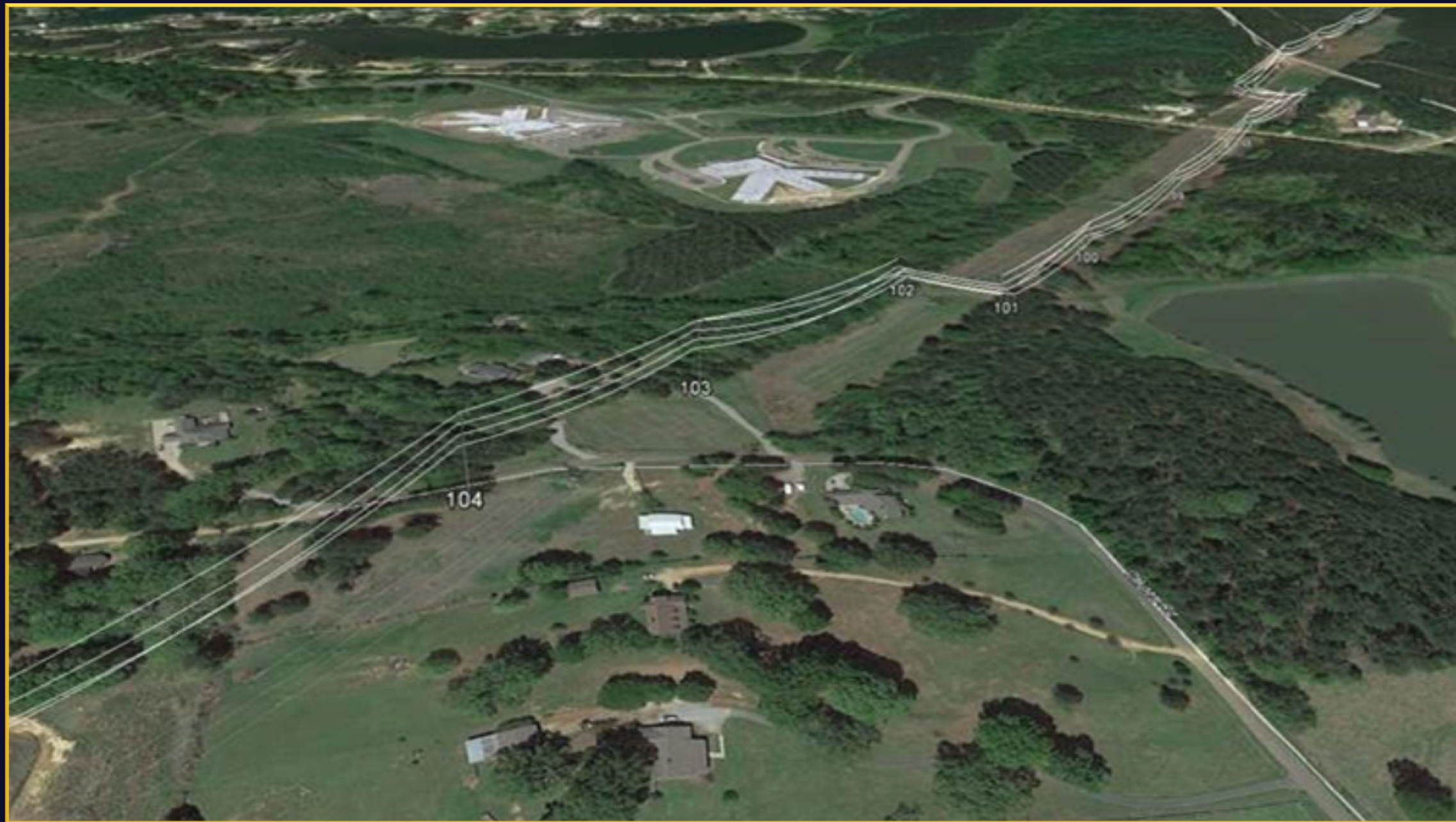
Steel vendor drawings (624 pages) comes in a massive drawing package where structures are grouped therefore not entirely in order.

Plan and profile drawings flapping in the wind on top of a pick-up truck.

Sag charts are grouped together and are in order by section # and can be difficult to find.



Traditional KMZ



KMZ export out of PLS is a great tool to use for estimating purposes, identifying access locations, giving the basic idea of what we want constructed, etc.

However, the simple KMZ export lacks a lot of the intelligent data from PLS-Cadd.

Ampirical has developed a way to combine the PLS-Cadd XML with a KMZ to create an intelligent KMZ model and a modern construction package.

At this point the presentation went to a hands on presentation of the tool and how data is extracted from PLS-Cadd and into the new tool.

Benefits, Advantages & Future Uses

User Friendly

Ease of locating drawings for a specific structure or section of conductor.



Real Time

Real time updates. Real time construction notes and pictures.

Revision Control

Drawings get revised and uploaded. Link always has latest drawing.



Review and Storage

Review and storage of inspection data and forms.

Tablet Accessible

On field personnel don't have to carry full size drawings and construction books. Everything is on a tablet.



Grid Maintenance

Imagine having your entire grid in a system similar to this. Easy access to files to make maintenance easy.

Secure

Secure platform. Permission controls.



Storm Restoration

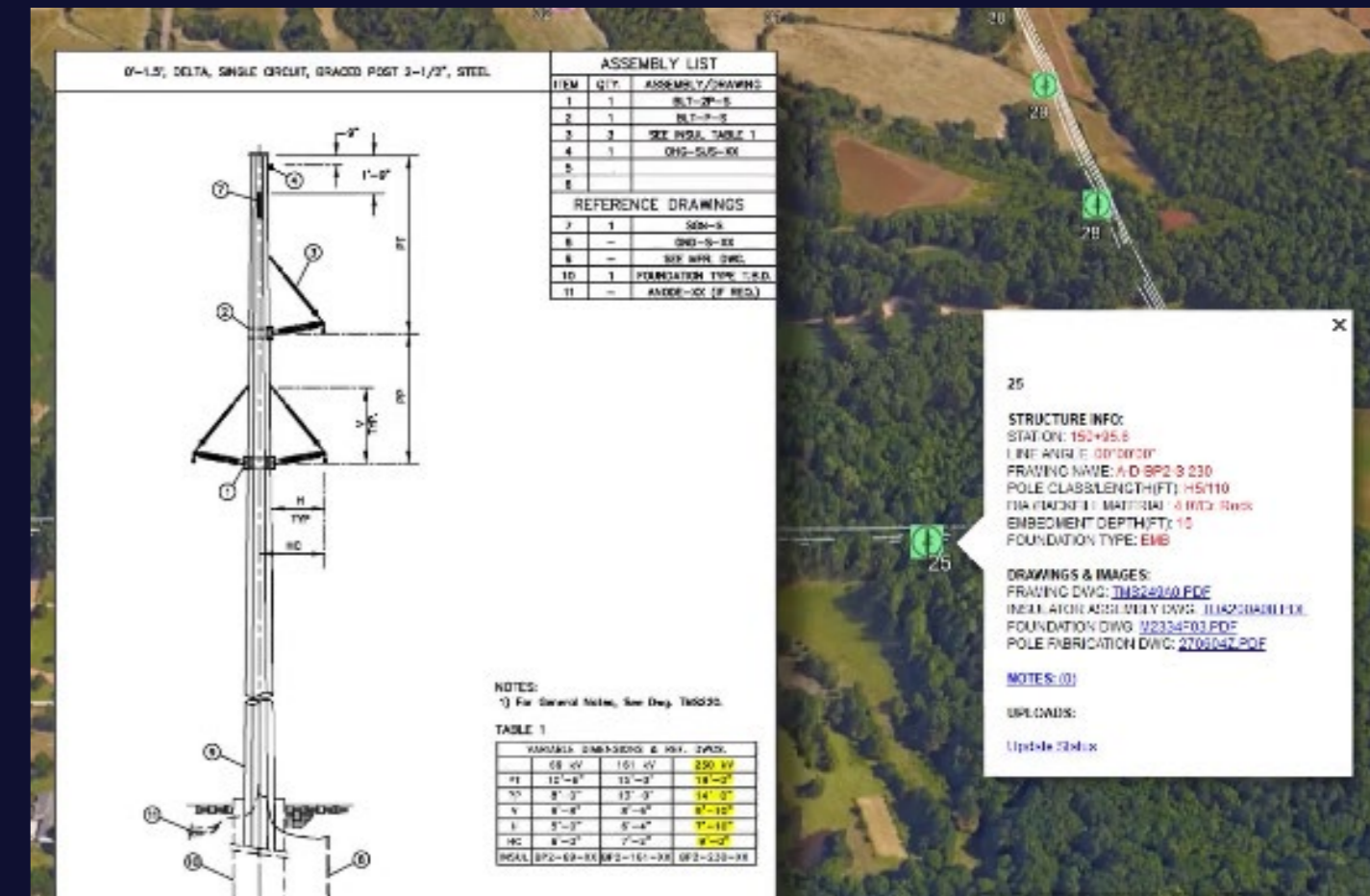
Imagine using this tool for storm restoration. Giving contractors coming in a tablet with all the line drawings and information needed to restore the line faster while maintaining data.



POWER-VIEW Questions

www.power-view.com

ktraub@ampirical.com



ENGINEERING **POWER-FUL** SOLUTIONSSM