



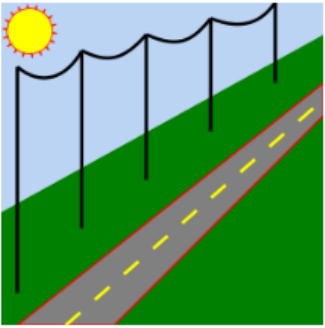
PLS-CADD – Optimum Spotting Option

Graeme Louw

© 2024 Bentley Systems, Incorporated

POWER LINE
S Y S T E M S
Part of Bentley Systems

Bentley®



PLS-CADD

The standard edition of PLS-CADD is a line design program that includes all the terrain, sag-tension, loads, clearances and drafting functions necessary for the design of an entire power line. Also includes **PLS-CADD/LITE** and **PLS-CADD/ULTRALITE**, but not any of the other items listed below ([compare editions](#)).

Optimum Spotting Option: Enables automatic selection of structure locations and types for the least cost design of a line.

SAPS Option: Finite element sag-tension option: provides a superior alternative to the built-in ruling span sag-tension.

Optimum Spotting Option Capabilities:

- Optimum Spotting
- AMBER
- Optimum Body and Leg Extension Selection
- Fit Pole Lengths to TIN
- Automatic Pole Selection